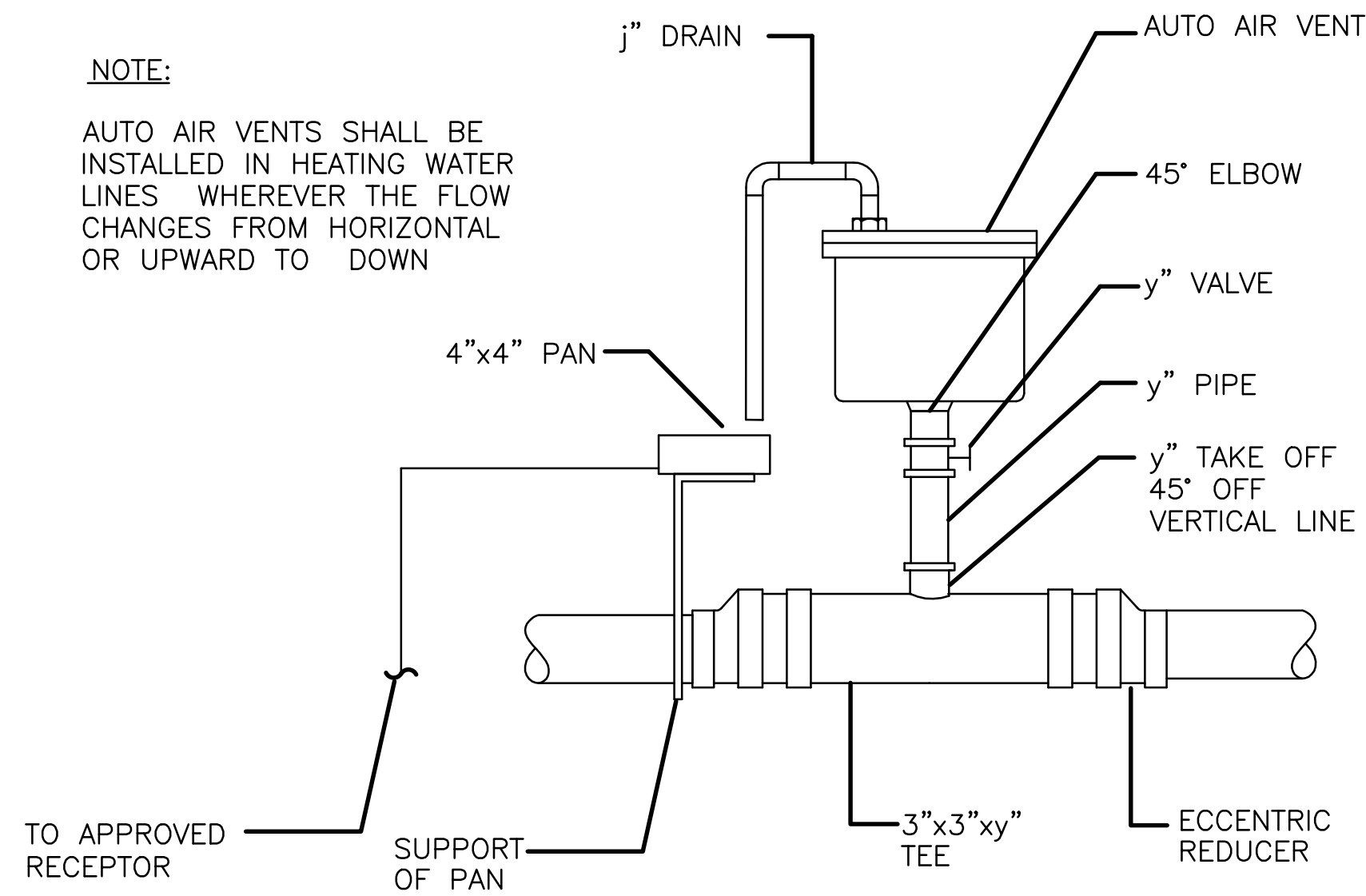


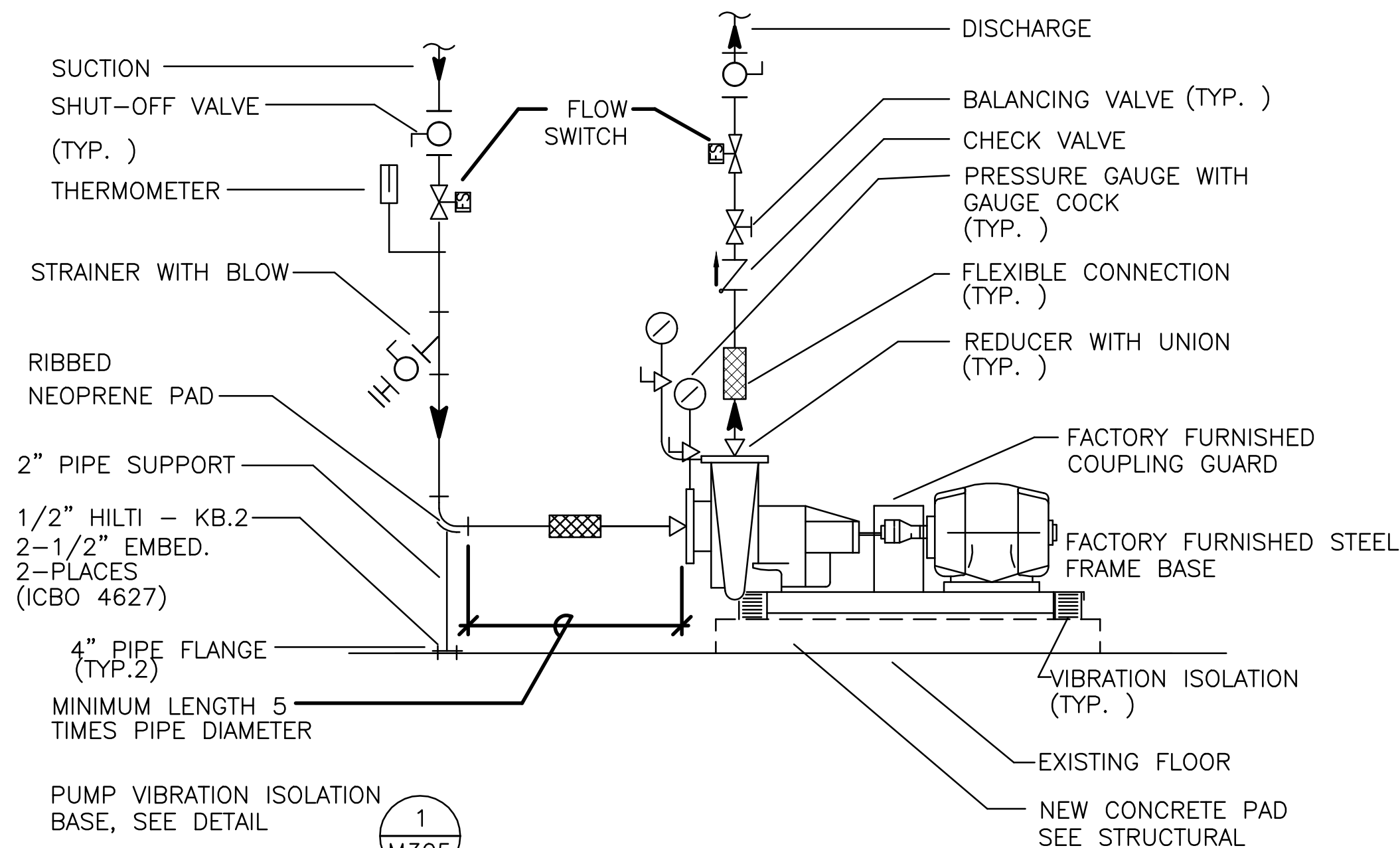
**NOTE:**

AUTO AIR VENTS SHALL BE INSTALLED IN HEATING WATER LINES WHEREVER THE FLOW CHANGES FROM HORIZONTAL OR UPWARD TO DOWN



TYPICAL AIR VENT DIAGRAM

SCALE NONE 4



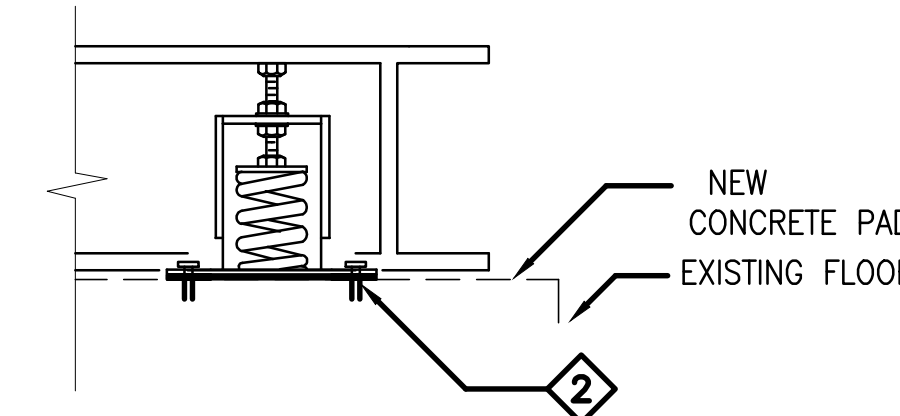
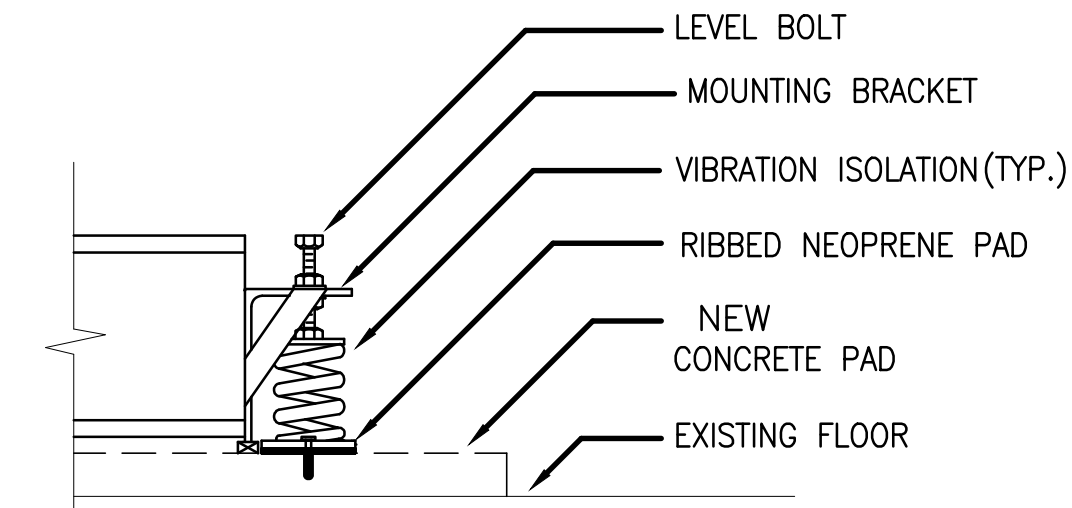
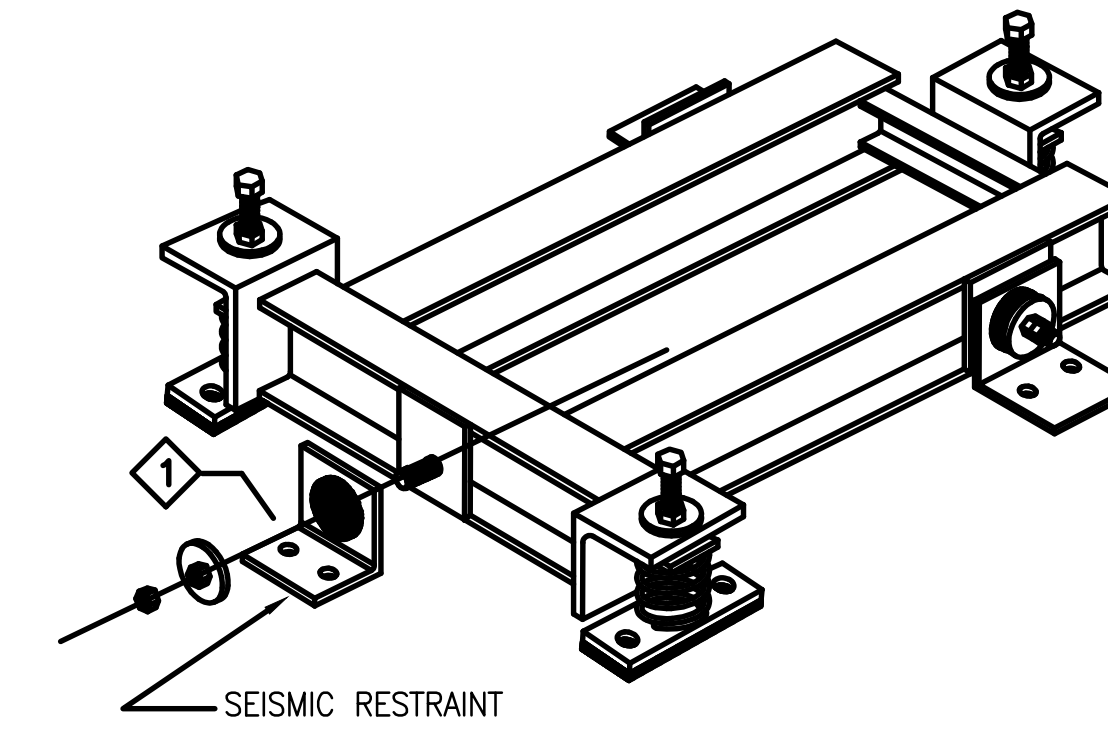
**NOTES :**

1. INSTALL CONSTRUCTION STRAINERS ON THE HEATING HOT WATER SYSTEM. REMOVE CONSTRUCTION STRAINERS TWO WEEKS AFTER START OF NORMAL OPERATION.
2. VALVES, STRAINERS AND CONNECTORS SHALL BE PUMP CONNECTION SIZE OR LARGER.
3. PROVIDE NEW FLOW SWITCH ON ALL PUMP SYSTEMS. (NEW & EXISTING TO REMAIN.)

TYPICAL WATER PUMP PIPING DIAGRAM

SCALE NONE 2

VIBREX TYPE RMSBP-3200  
STRUCTURAL STEEL BASE WITH ALL-WELDED CONSTRUCTION, STABLE SPRINGS, HEIGHT SAVING BRACKETS AND OSHPD PRE-APPROVED NUMBER R-0437 SEISMIC RESTRAINTS  
2" STATIC DEFLECTION:  
APPROVED OSHPD # R-0029.



**NOTES:**

- 1 3200KE SEISMIC RESTRAINTS TO RESTRAIN MOVEMENT IN ALL DIRECTIONS.
- 2 3/4" DIA. TRUBOLT REDHEAD EXPANSION ANCHORS WITH MIN. 3-1/4" EMBED. IN EXISTING HARDROCK CONCRETE. OR 3/4" HILTI KB-II BOLTS (ICBO #ER-4627) WITH 3-1/4" EMBEDMENT IN NEW 3000 PSI HARDROCK CONCRETE.

**THREADED PIPING**

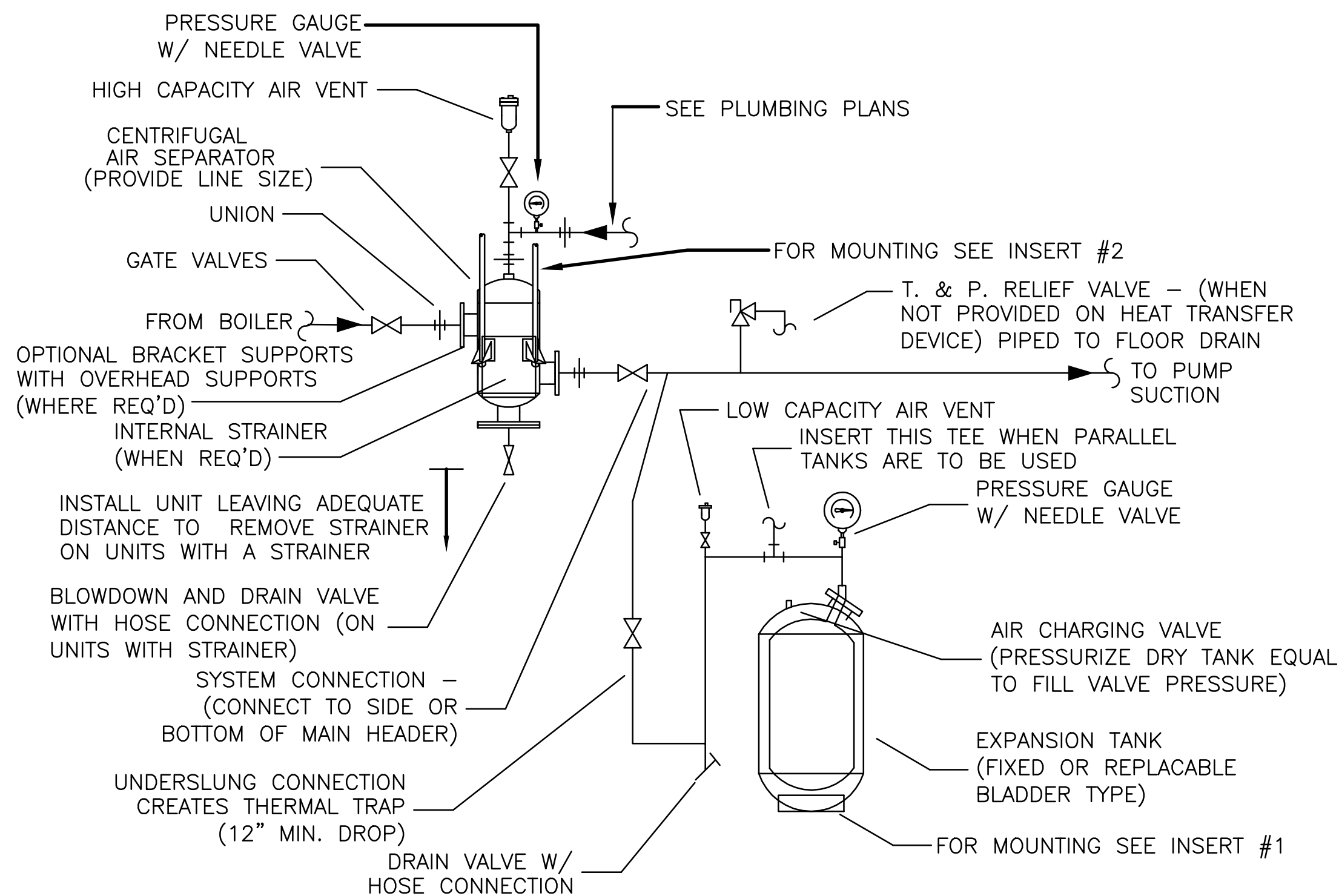
KEY NOTE: THIS IS A TYPICAL DRAWING AND IS SUBMITTED FOR APPROVAL OF ISOLATION TYPE ONLY. CERTIFIED SUBMITTALS INCLUDING ANCHORAGE CALCULATIONS WILL BE FURNISHED AFTER RECEIPT OF EQUIPMENT SUBMITTALS.

TYPICAL WATER PUMP MOUNTING DIAGRAM

SCALE NONE 1

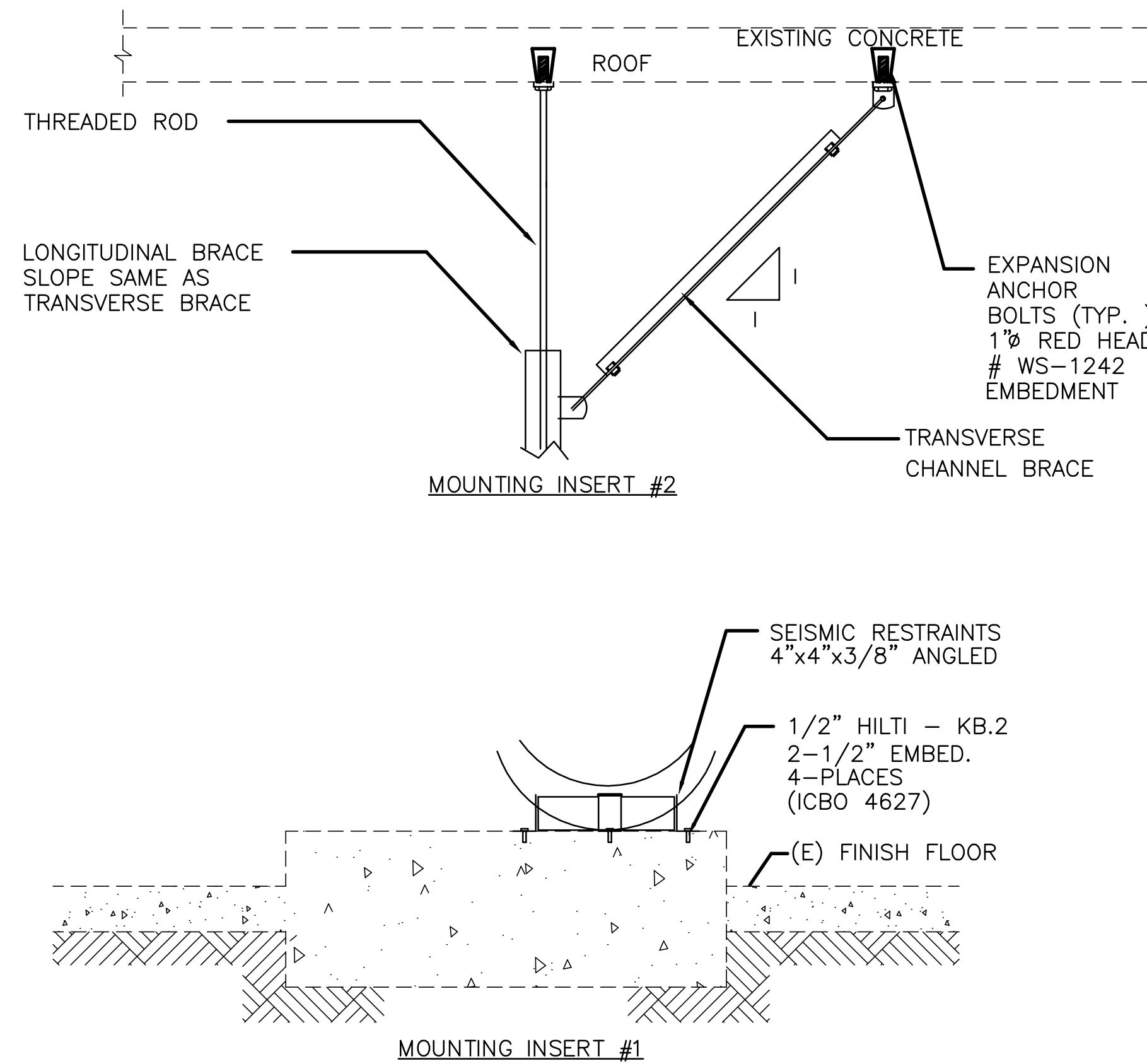
**NOTES:**

1. PROVIDE ANCHOR BOLTS, STRUCTURAL STEEL SUPPORTS AND TRANSVERSE BRACING IN ACCORDANCE WITH SMACNA GUIDELINE FOR SEISMIC RESTRAINTS OF MECHANICAL & PLUMBING SYSTEMS.

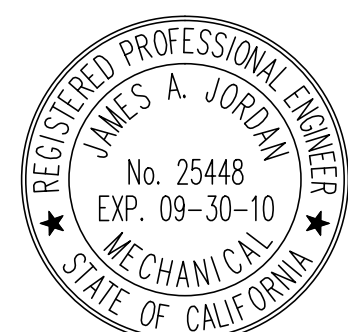


AIR SEPARATOR AND EXPANSION TANK DETAIL

SCALE NONE 3



PRIME CONTRACTOR: POJUAQUE PUEBLO SERVICES



GLENDALE OFFICE  
CAMARILLO OFFICE  
TEL: (818) 948-9700  
FAX: (818) 948-9701



DESIGN FOR:  
**BUILDING 1408**  
**REPLACE CHILLER, BOILER AND AHU'S**  
EDWARDS AIR FORCE BASE, CALIFORNIA 93523-8450

QUOTE/DWG #:

DRAWN BY:  
TS

CHECKED BY:

DATE:  
12/05/2008

SCALE:  
AS NOTED

REVISION HISTORY

1
2
3
4
5

PROJECT  
FA9301-06-D-0010

M3.5

RECORD DRAWINGS  
SUBMITTED 11/21/2008

J:\08-038 - EMB Building 1408 - Chiller, Boiler, AHU's - Western\08-038 - M3.5.dwg, 11/22/2008 9:22:57 AM