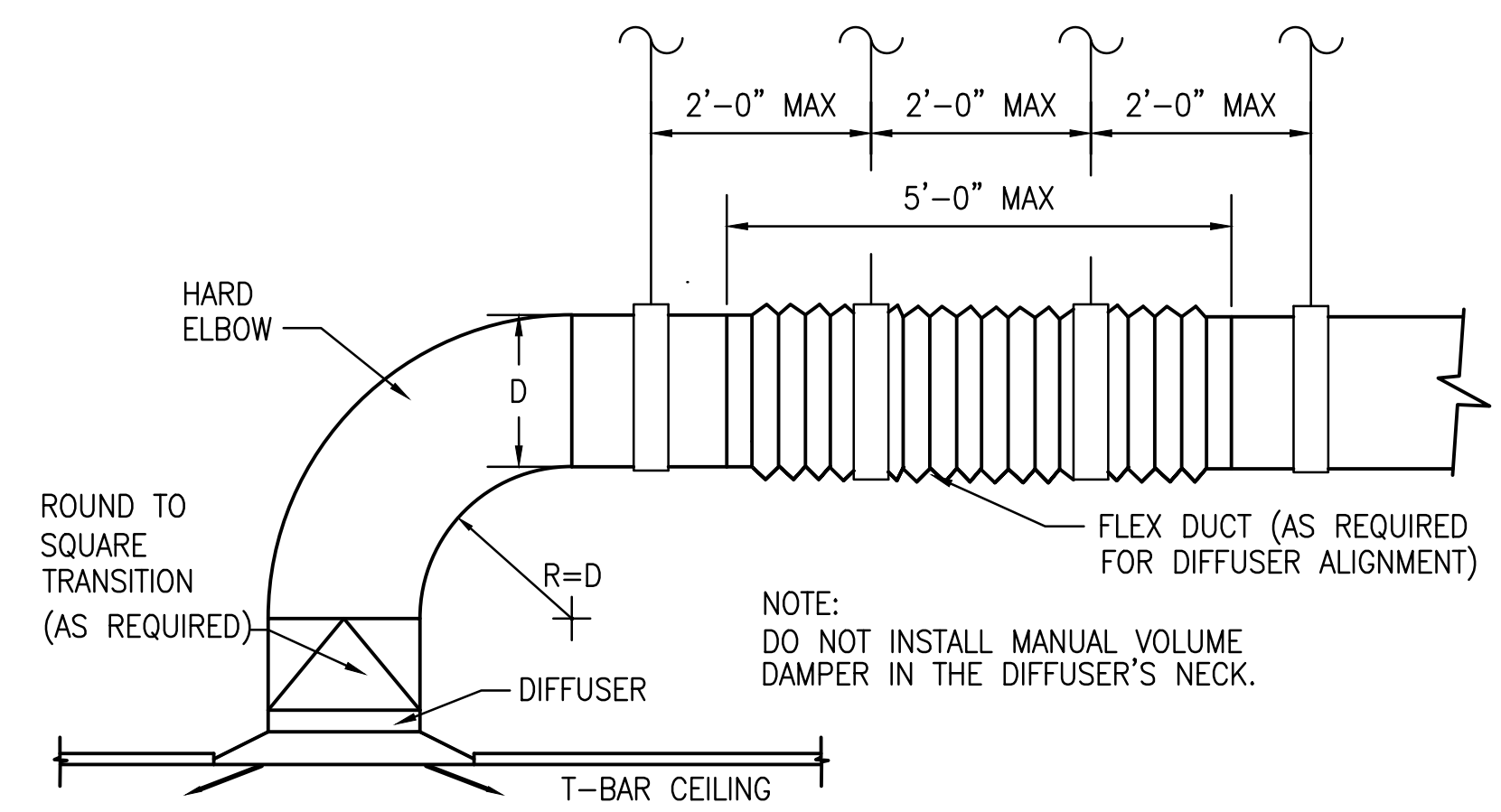
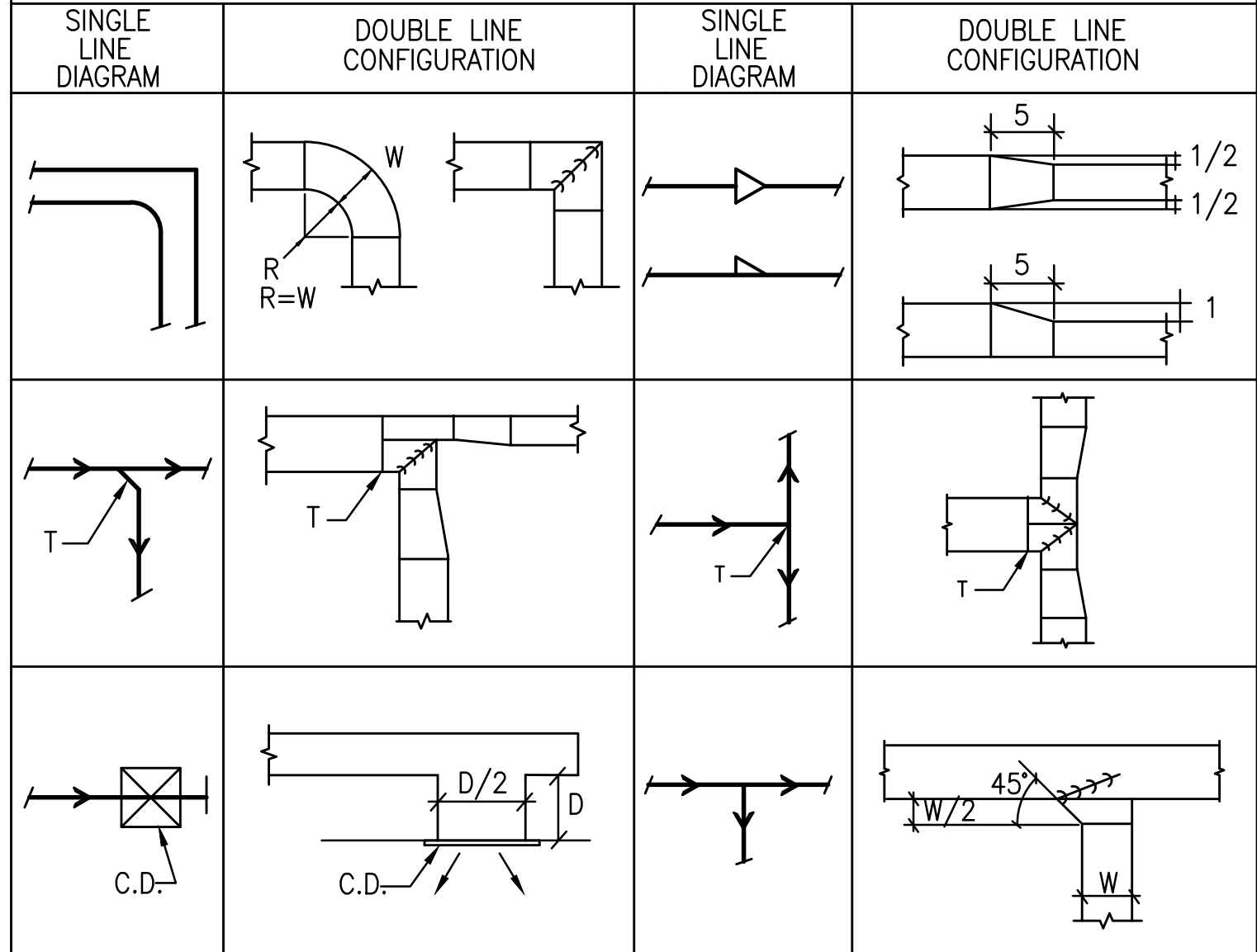


SCALE NONE 5

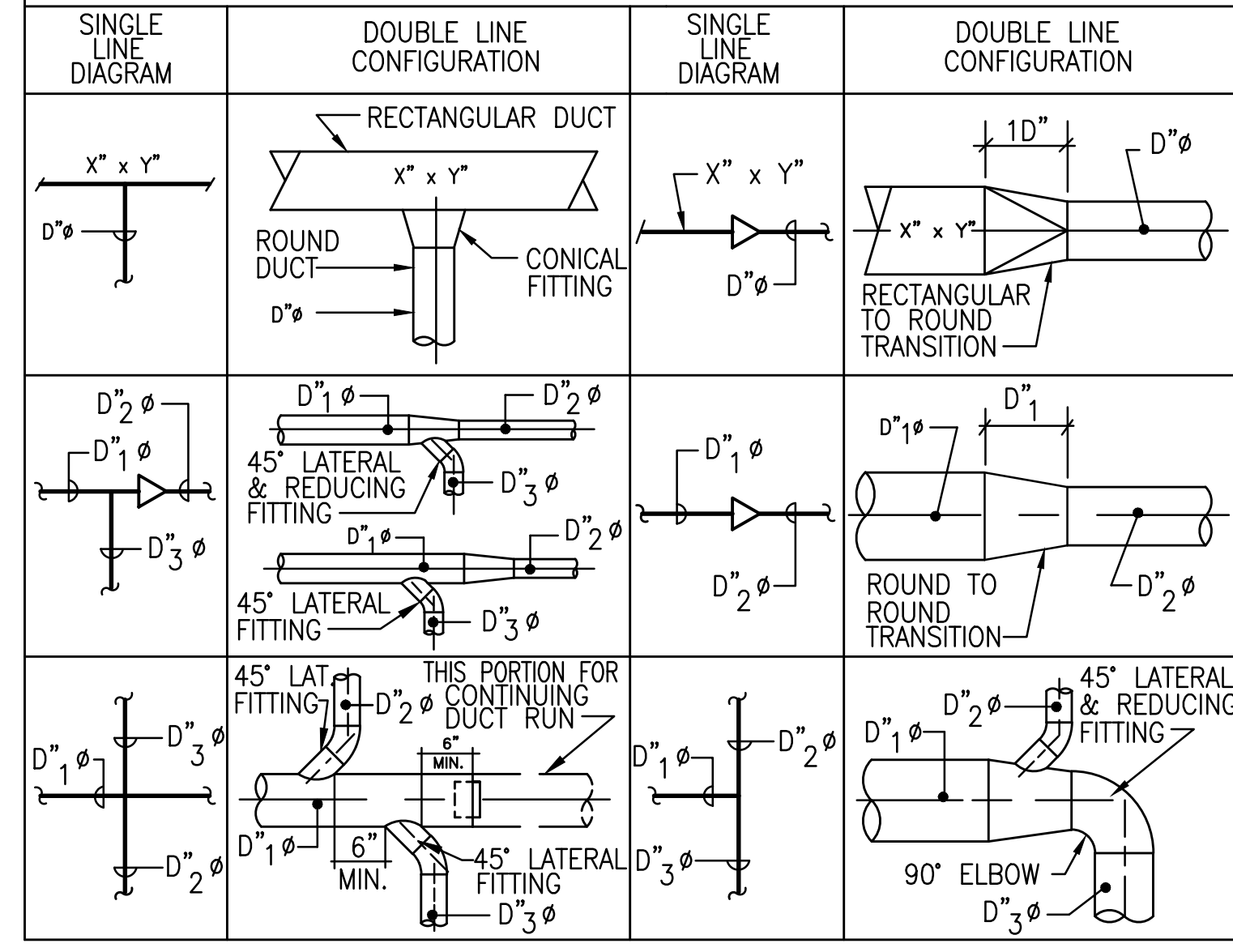


SCALE NONE 2

RECTANGULAR LOW PRESSURE DUCTWORK

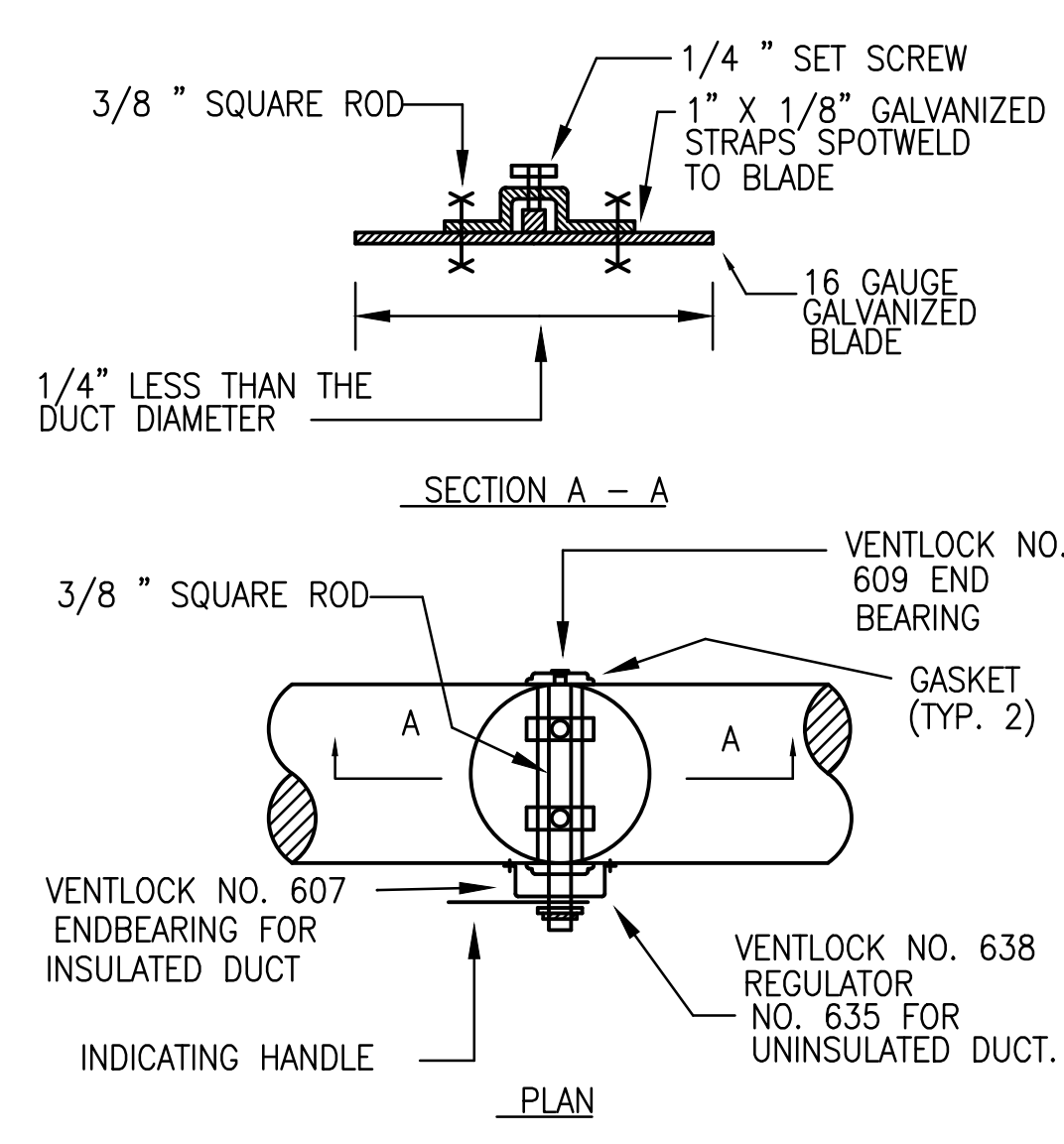


ROUND LOW PRESSURE DUCTWORK



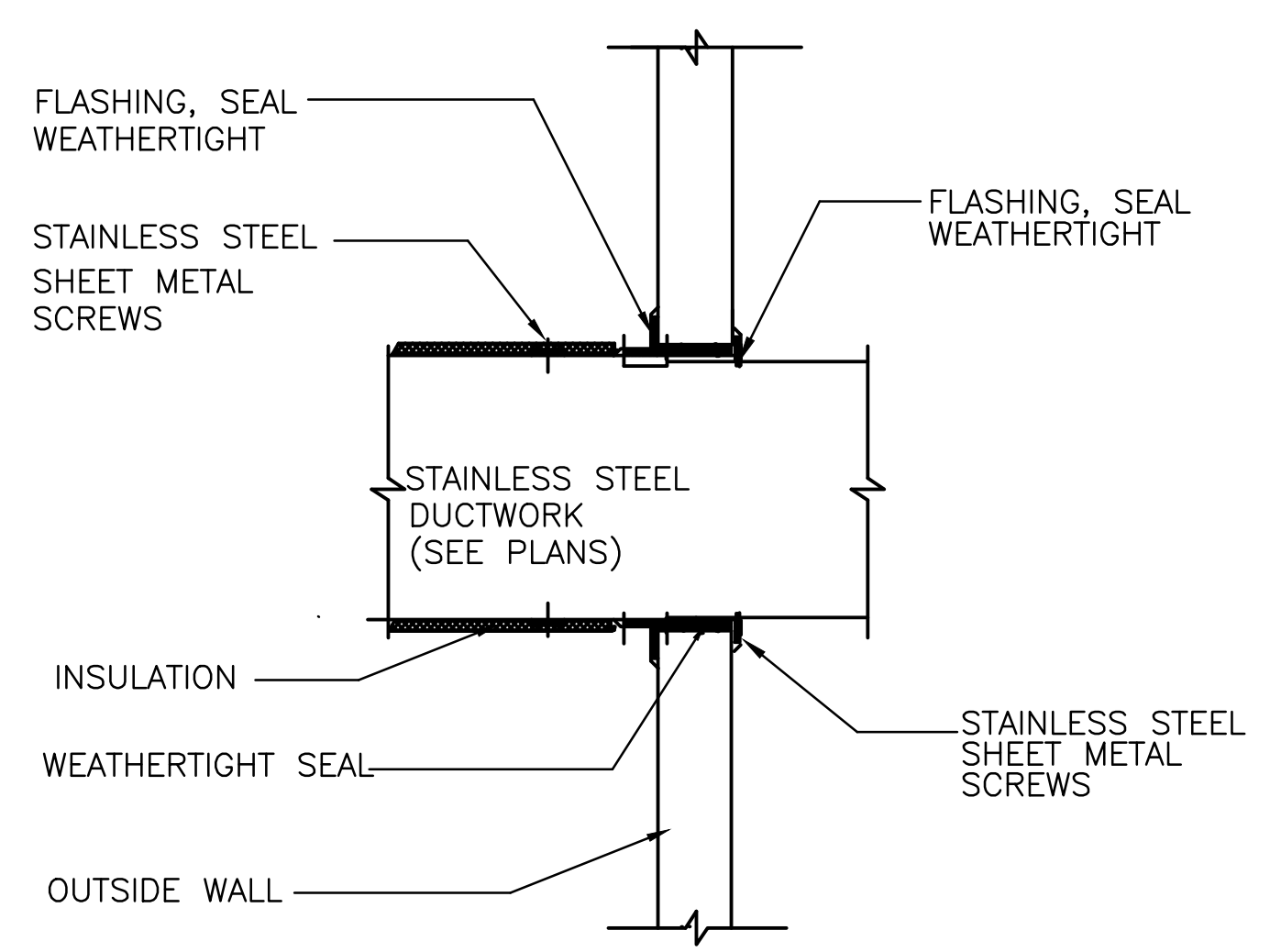
SCALE NONE 6

FLEXIBLE CONNECTION DIAGRAM



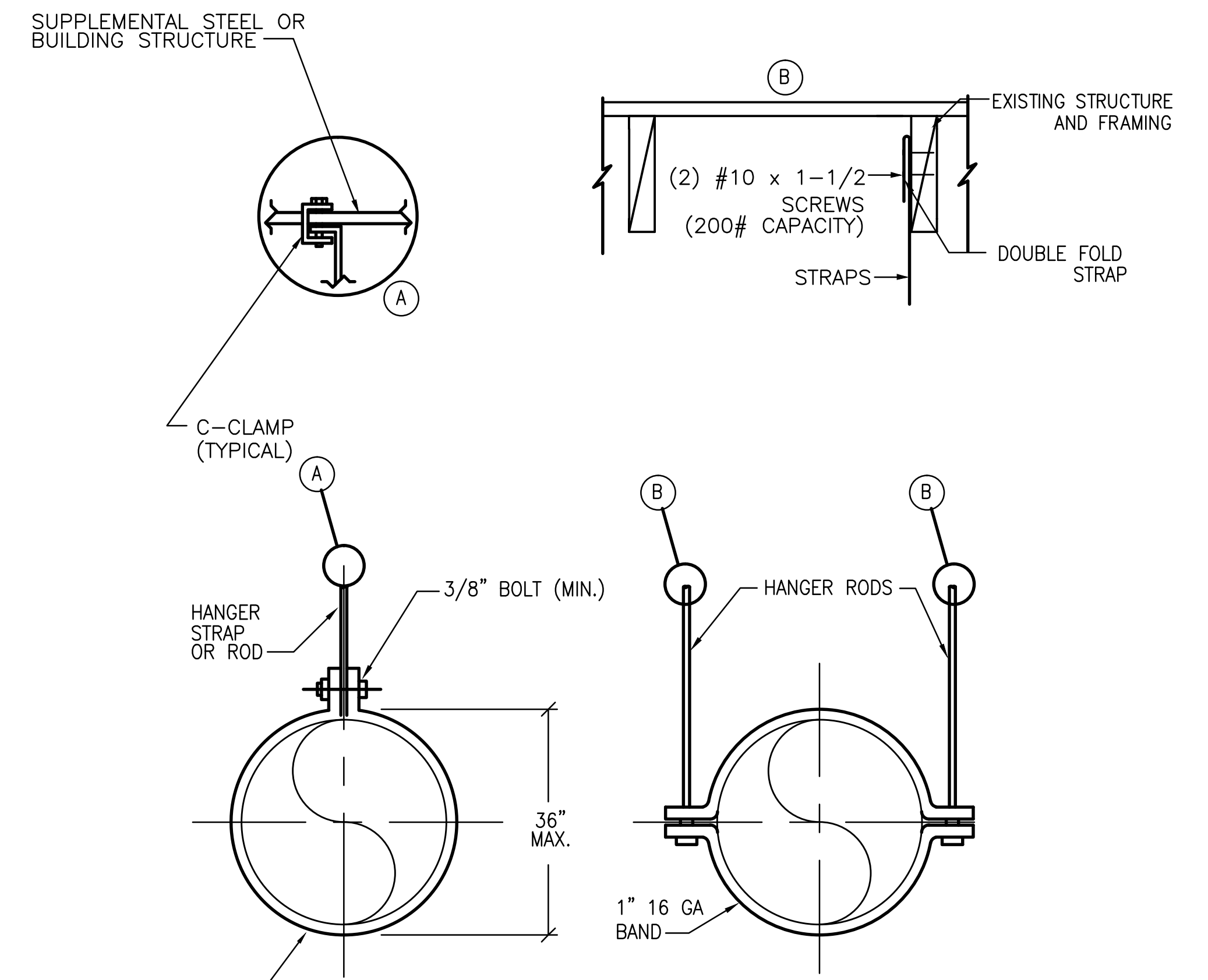
SCALE NONE 3

ROUND VOLUME DAMPER DIAGRAM



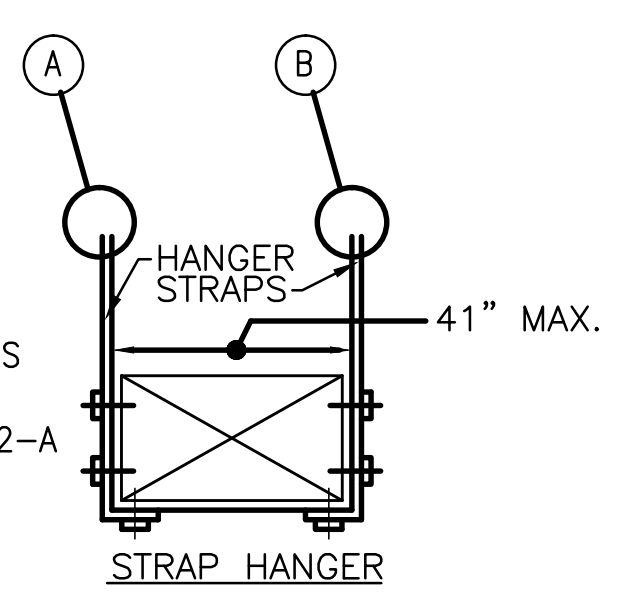
SCALE NONE 4

DUCT THRU WALL



ROUND DUCT HANGERS			
DUCT DIA	MAX SPACING	ROD	STRAP
10" DOWN	12'-0"	1/4"	1"x0.030 (22 GA)
11" TO 24"	12'-0"	1/4"	1"x0.030 (22 GA)
25" TO 36"	12'-0"	1/4"	1"x0.036 (20 GA)
37" TO 94"	12'-0"	TWO 3/8"	-

ROUND DUCT HANGERS

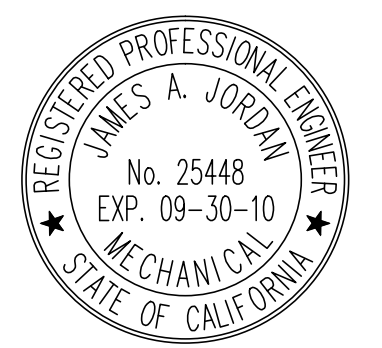


FOR RECTANGULAR DUCT HANGERS MINIMUM SIZE SEE CALIFORNIA MECHANICAL CODE TABLE # 6-2-A

NOTES:  
NO POP RIVETS ALLOWED, USE SELF-TAPPING SHEETMETAL SCREWS ONLY.

DUCT HANGERS

PRIME CONTRACTOR: POJUAQUE PUEBLO SERVICES



RECORD DRAWINGS

SCALE NONE 1

GLendale OFFICE  
11111 GLENDALE BLVD., SUITE 210  
GLENDALE, CA 91205  
TEL: (818) 948-9780  
FAX: (818) 948-9781

CAMARILLO OFFICE  
SUITE 201  
1000 CAMARILLO BLVD., SUITE 201  
CAMARILLO, CA 93022  
TEL: (805) 987-4001  
FAX: (805) 987-4004

BUDLONG & ASSOCIATES, INC.  
CONSULTING ENGINEERS

JOB NO. 08-038

DESIGN FOR:  
**BUILDING 1408**  
**REPLACE CHILLER, BOILER AND AHU'S**  
EDWARDS AIR FORCE BASE, CALIFORNIA 93523-8450

QUOTE/DWG #:

DRAWN BY: TS

CHECKED BY:

DATE: 12/05/2008

SCALE: AS NOTED

REVISION HISTORY

1	
2	
3	
4	
5	

PROJECT  
FA9301-06-D-0010

M3.3