

KEY NOTES

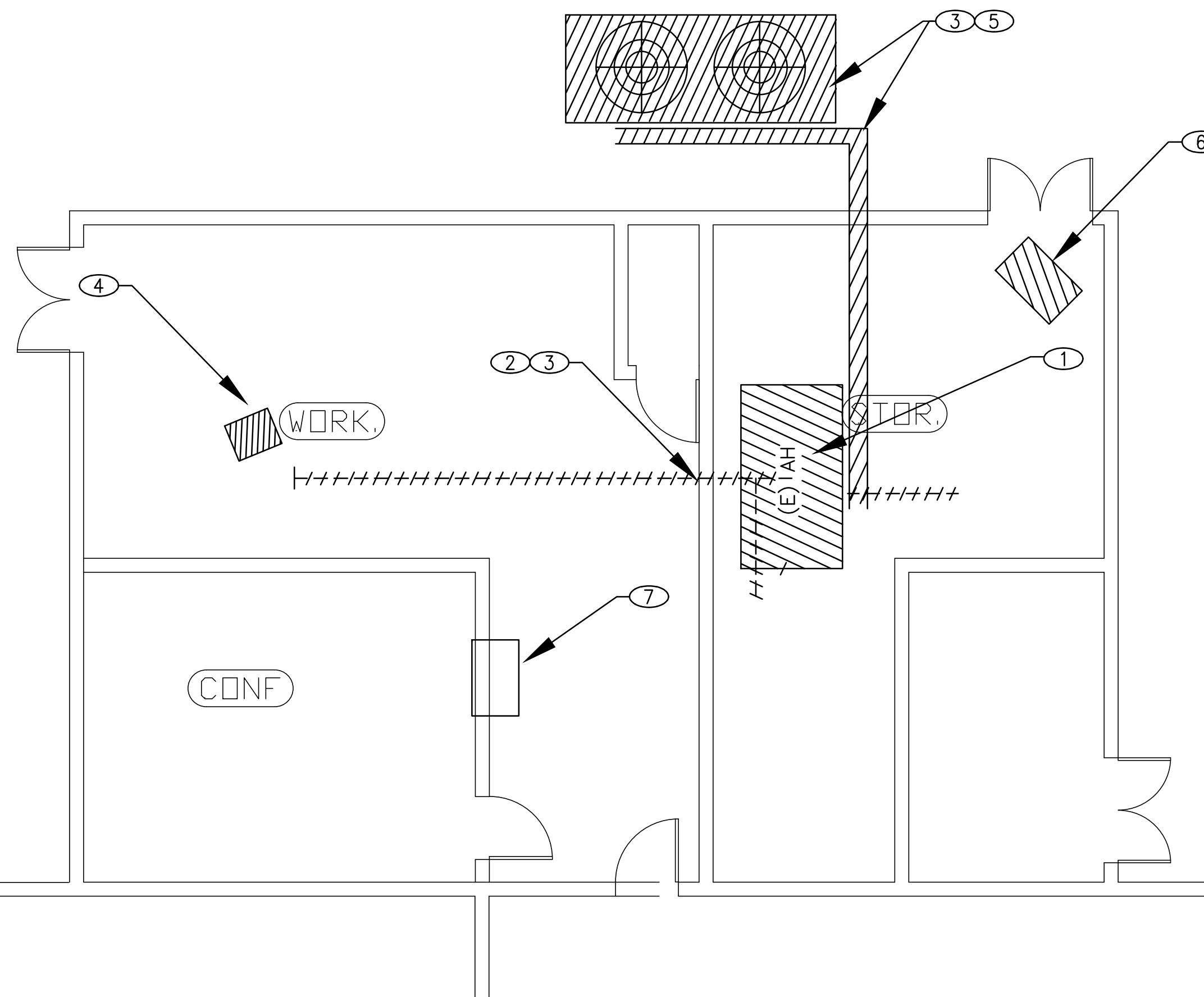
1. PROVIDE PRE-BALANCE AND RECORD THE EXISTING AH'S AIR CFM, STEAM PSI, AND WATER GPM, ELECTRICAL FLA ETC.
2. THE WORK SHALL BE PERFORM IN PHASES
3. COORDINATE WITH THE ELECTRICAL AND THE CONTROL CONTRACTORS FOR THE DISCONNECT AND REMOVAL OF THEIR EQUIPMENT FROM EACH AH SYSTEMS AND TO KEEP THE REST OF THE BUILDING AH SYSTEMS IN SERVICE DURING PHASING.

DEMOLITION NOTES

- 1 REMOVE (E) AIR HANDLING UNITS INCLUDING ASSOCIATED PIPING, DUCTWORK, SUPPORTS, BRACING, CONTROLS, RETURN FANS ETC... CONNECTING TO UNIT, TYPICAL HATCHED
- 2 REMOVE EXISTING DUCTWORK, AIR DISTRIBUTION DEVICES, SUPPORTS, BRACING, ETC. FROM EXISTING TO BE REMOVED AH, UP WALL AND ACROSS CEILING.
- 3 PATCH AND SEAL ALL WALL PENETRATIONS TO MATCH EXISTING CONDITIONS.
- 4 REMOVE EXISTING RADIANT HEATER. INCLUDING ASSOCIATED PIPING, SUPPORTS, BRACING, CONTROLS, ELECTRICAL ETC. CONNECTING TO UNIT, CAP AND SEAL EXISTING GAS LINE AND FLUE
- 5 REMOVE EXISTING CONDENSING UNIT AND ASSOCIATED REFRIGERANT PIPING, CONTROLS, ELECTRICAL, ETC.
- 6 REMOVE EXISTING SPACE HEATER. INCLUDING ASSOCIATED PIPING, SUPPORTS, BRACING, CONTROLS, ELECTRICAL ETC. CONNECTING TO UNIT, CAP AND SEAL EXISTING GAS LINE AND FLUE
- 7 (E) THROUGH-WALL AC UNIT AND ASSOCIATED PIPING, CONTROLS, ELECTRICAL, ETC TO REMAIN.

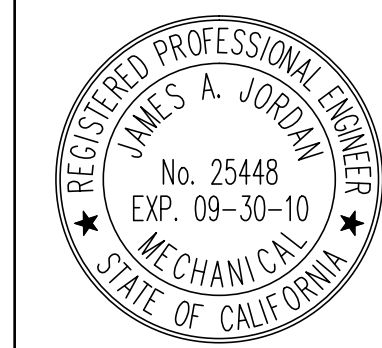
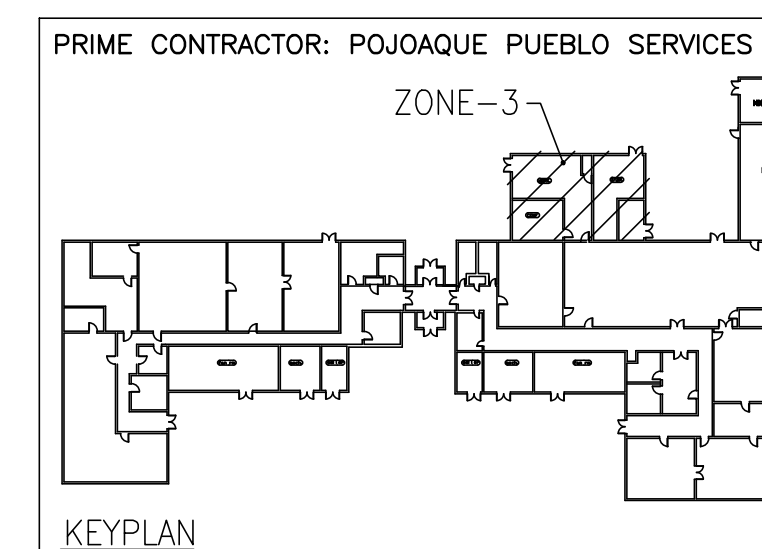
SHEET LEGEND

SYMBOL/ABBREVIATION	DESCRIPTION
(ER)	EXISTING TO REMAIN
(E)	EXISTING
(R)	REMOVE
(RL)	RELOCATED
(RS)	REMOVE & SAVE FOR RELOCATION
● (POD)	POINT OF DISCONNECT
--- (Dashed line)	EXISTING TO REMAIN (BROKEN)
/// (Hatched)	EXISTING TO BE REMOVED (HATCHED)



1
-
ZONE-3 MECHANICAL ROOM NEW WORK
SCALE: 1/4"=1'-0"

RECORD DRAWINGS
SUBMITTED 11/21/2008



GLENDALE OFFICE
1001 W. GLENDALE BLVD.
GLENDALE, CA 91205
TEL: (626) 987-4001
FAX: (626) 987-4004

CAMARILLO OFFICE
SUITE 201
1000 W. CAMARILLO BLVD.
CAMARILLO, CA 93012
TEL: (805) 987-4001
FAX: (805) 987-4004

JOB NO. 08-038



DESIGN FOR:
BUILDING 1408
REPLACE CHILLER, BOILER AND AHU'S
EDWARDS AIR FORCE BASE, CALIFORNIA 93523-8450

QUOTE/DWG #:

DRAWN BY:
TS

CHECKED BY:

DATE:
12/05/2008

SCALE:
AS NOTED

REVISION HISTORY

1	
2	
3	
4	
5	

PROJECT
FA9301-06-D-0010

M2.3D