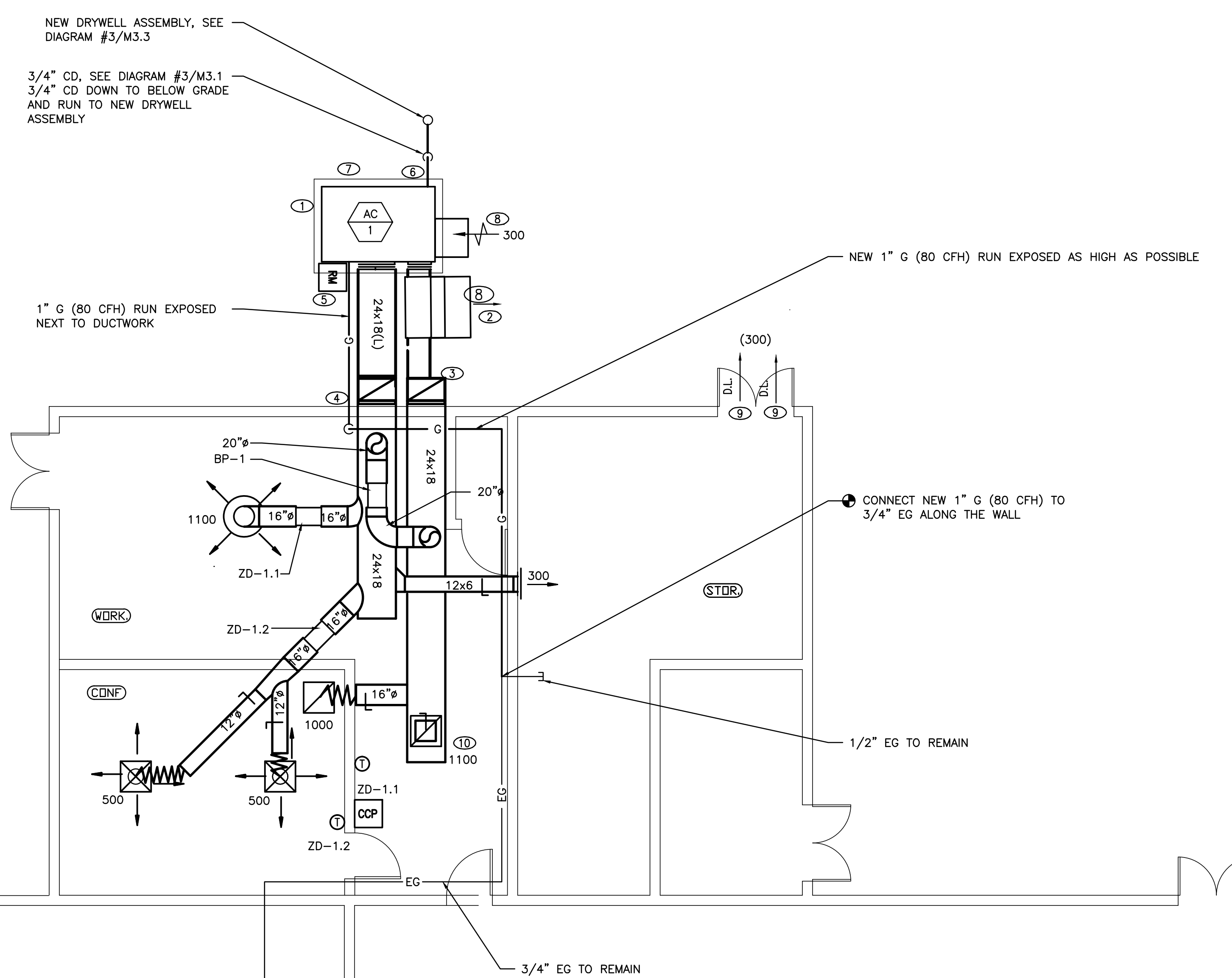
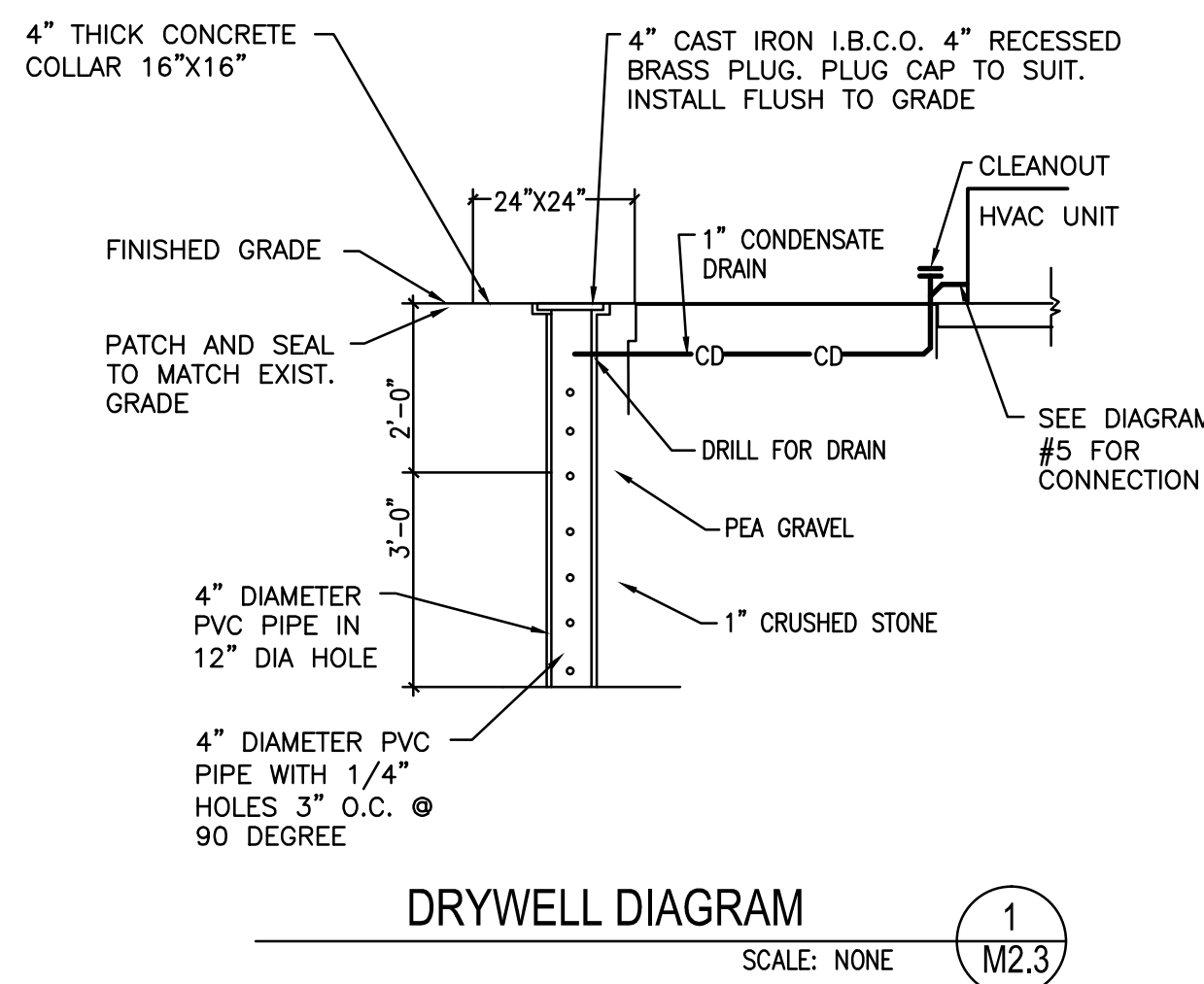


LOW PRESSURE GAS SIZING CHART	
250' TDL	
PIPE	MAX. CFH
1/2"	30
3/4"	64
1"	120
1 1/4"	246
1 1/2"	369
2"	710
2 1/2"	1,131
3"	2,000

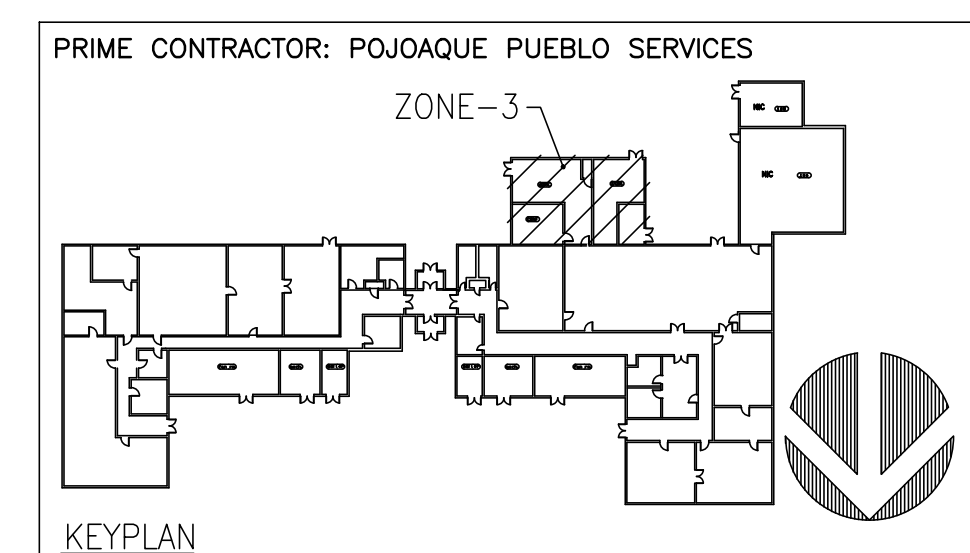
- CONSTRUCTION NOTES**
- 6" CONCRETE PAD ON GRADE BY GC.
 - MODULATING POWER EXHAUSTER
 - RA 18x24(1L) UP WALL & ELBOW INTO ATTIC SPACE. CAP AIRTIGHT AT BOTTOM AND CONNECT 16x26(1L) INTO SIDE OF 18x28 DUCT.
 - SA 24x18(1L) ELBOW UP WALL & ELBOW INTO ATTIC SPACE. PROVIDE TURN VANES AT ALL ELBOWS. CONTINUE AND CONNECT TO UNIT OPENING SIZE WITH
 - RELAY MODULE CONNECTS TO FIRE ALARM SYSTEM TO SHUT DOWN UNIT IF THERE IS SMOKE (SEE ELECTRICAL DRAWINGS FOR EXACT LOCATION).
 - DIVISION 16 SHALL BE RESPONSIBLE FOR LIGHT FIXTURE TEMPORARY REMOVAL AND RECONNECT AFTER PROJECT COMPLETION.
 - EXTEND EXISTING GAS FROM CAPPED STUB IN STORAGE ROOM (SEE PLUMBING).
 - DISCHARGE CONDENSATE DRAIN TO GRADE (SEE PLUMBING).
 - RELIEF THROUGH EXISTING DOOR LOUVERS.
 - 16x16 DROP FROM UNDERSIDE OF DUCT WITH MVD AND RAR.

SHEET LEGEND

SYMBOL/ABBREVIATION	DESCRIPTION
(E)	EXISTING
(N)	NEW
	NEW WORK (SOLID)
	LINED DUCTWORK
	ROUND DIFFUSER
	CEILING DISTRIBUTION
	RETURN AIR GRILLE
	THERMOSTAT (MAX. 48" A.F.F.)
D.L.	DOOR LOUVER
	SIDE WALL REGISTER/GRILLE



1
ZONE-3 MECHANICAL ROOM NEW WORK
SCALE: 1/4"=1'-0"



RECORD DRAWINGS
SUBMITTED 11/21/2008

GLENDALE OFFICE
10111 GLENDALE BLVD.
GLENDALE, CA 91205
TEL: (610)88-9780
FAX: (610)88-9781

CAMARILLO OFFICE
SUITE 201
10000 CAMARILLO BLVD.
CAMARILLO, CA 93012
TEL: (805)987-4001
FAX: (805)987-4004

JOB NO. 08-036

BUDLONG & ASSOCIATES, INC.
CONSULTING ENGINEERS
WWW.BUDLONG.COM

DESIGN FOR:
BUILDING 1408
REPLACE CHILLER, BOILER AND AHU'S
EDWARDS AIR FORCE BASE, CALIFORNIA 93523-8450

QUOTE/DWG #:

DRAWN BY:
TS

CHECKED BY:

DATE:
12/05/2008

SCALE:
AS NOTED

REVISION HISTORY

1	
2	
3	
4	
5	

PROJECT
FA9301-06-D-0010

M2.3