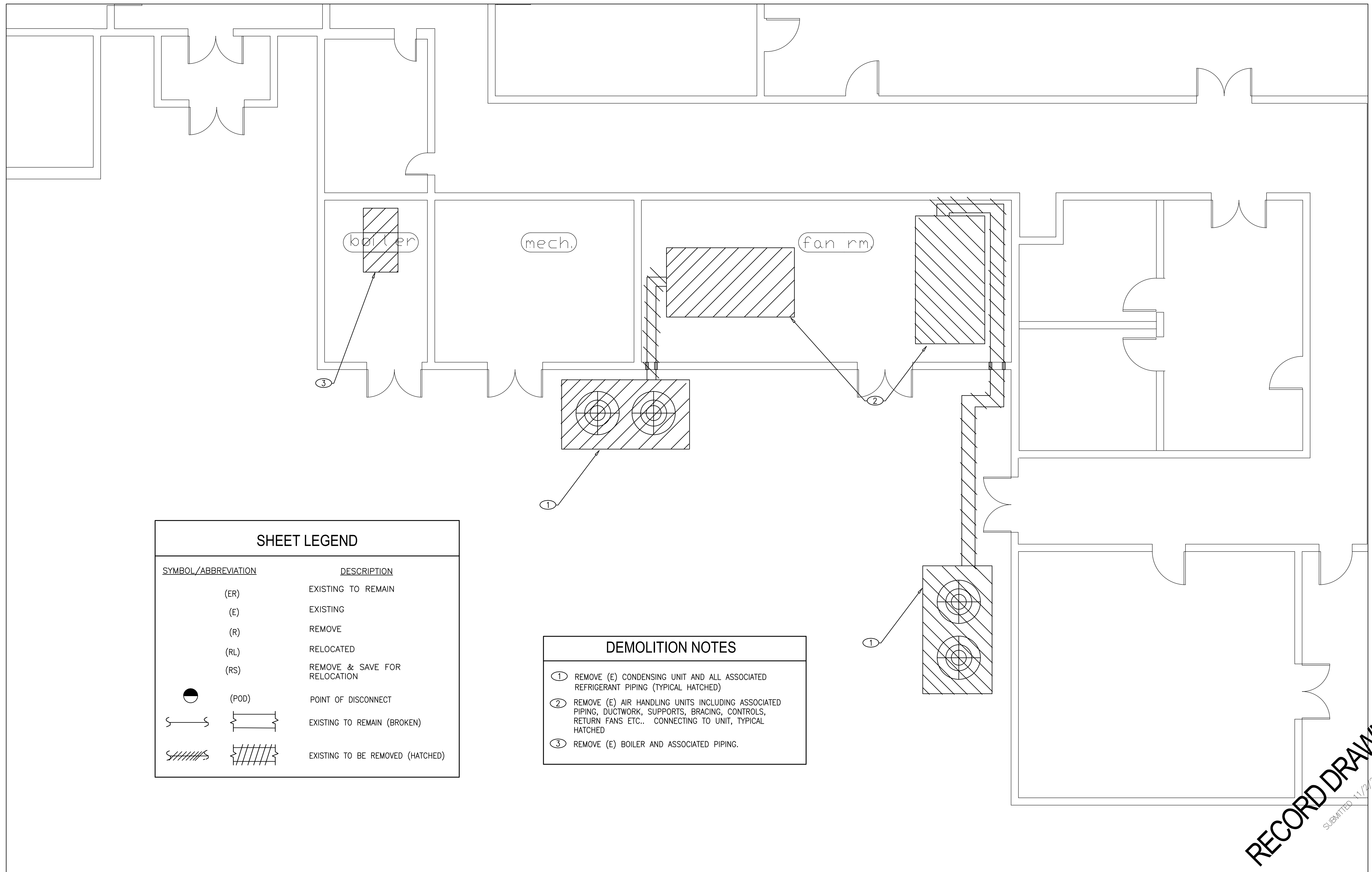


J:\08-038 - EMB Building 1408 - Chiller, Boiler, AHU's - Western\08-038 - M2.1D Zone 1 - Demolition.dwg, 11/2/2008 9:21:25 AM



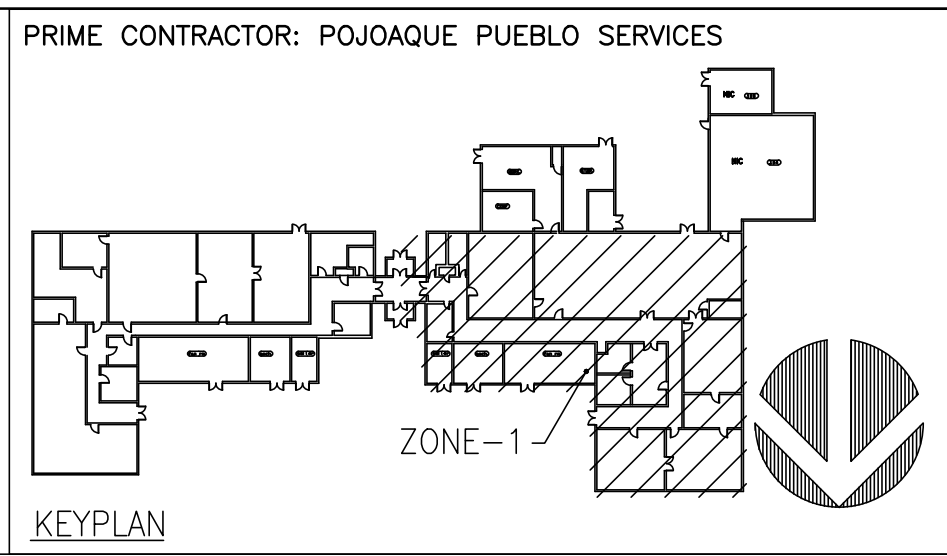
SHEET LEGEND	
SYMBOL/ABBREVIATION	DESCRIPTION
(ER)	EXISTING TO REMAIN
(E)	EXISTING
(R)	REMOVE
(RL)	RELOCATED
(RS)	REMOVE & SAVE FOR RELOCATION
● (POD)	POINT OF DISCONNECT
— —	EXISTING TO REMAIN (BROKEN)
////	EXISTING TO BE REMOVED (HATCHED)

DEMOLITION NOTES	
①	REMOVE (E) CONDENSING UNIT AND ALL ASSOCIATED REFRIGERANT PIPING (TYPICAL HATCHED)
②	REMOVE (E) AIR HANDLING UNITS INCLUDING ASSOCIATED PIPING, DUCTWORK, SUPPORTS, BRACING, CONTROLS, RETURN FANS ETC.. CONNECTING TO UNIT, TYPICAL HATCHED
③	REMOVE (E) BOILER AND ASSOCIATED PIPING.

1
—
—

ZONE-1 MECHANICAL ROOM DEMOLITION

SCALE: 1/4"=1'-0"



RECORD DRAWINGS

SUBMITTED 11/24/2008

CAMARILLO OFFICE
 2011
 SUITE 201
 1000 CAMARILLO BLVD
 CAMARILLO, CA 93025
 TEL: (805)987-4001
 FAX: (805)987-4004

BUDLONG
 & ASSOCIATES, INC.
 CONSULTING ENGINEERS
 WWW.BUDLONG.COM

DESIGN FOR:
BUILDING 1408
REPLACE CHILLER, BOILER AND AHU'S
 EDWARDS AIR FORCE BASE, CALIFORNIA 93523-8450

QUOTE/DWG #:	
DRAWN BY:	TS
CHECKED BY:	
DATE:	12/05/2008
SCALE:	AS NOTED
REVISION HISTORY	
1	
2	
3	
4	
5	
PROJECT	FA9301-06-D-0010
M2.1D	

JOB NO. 08-038