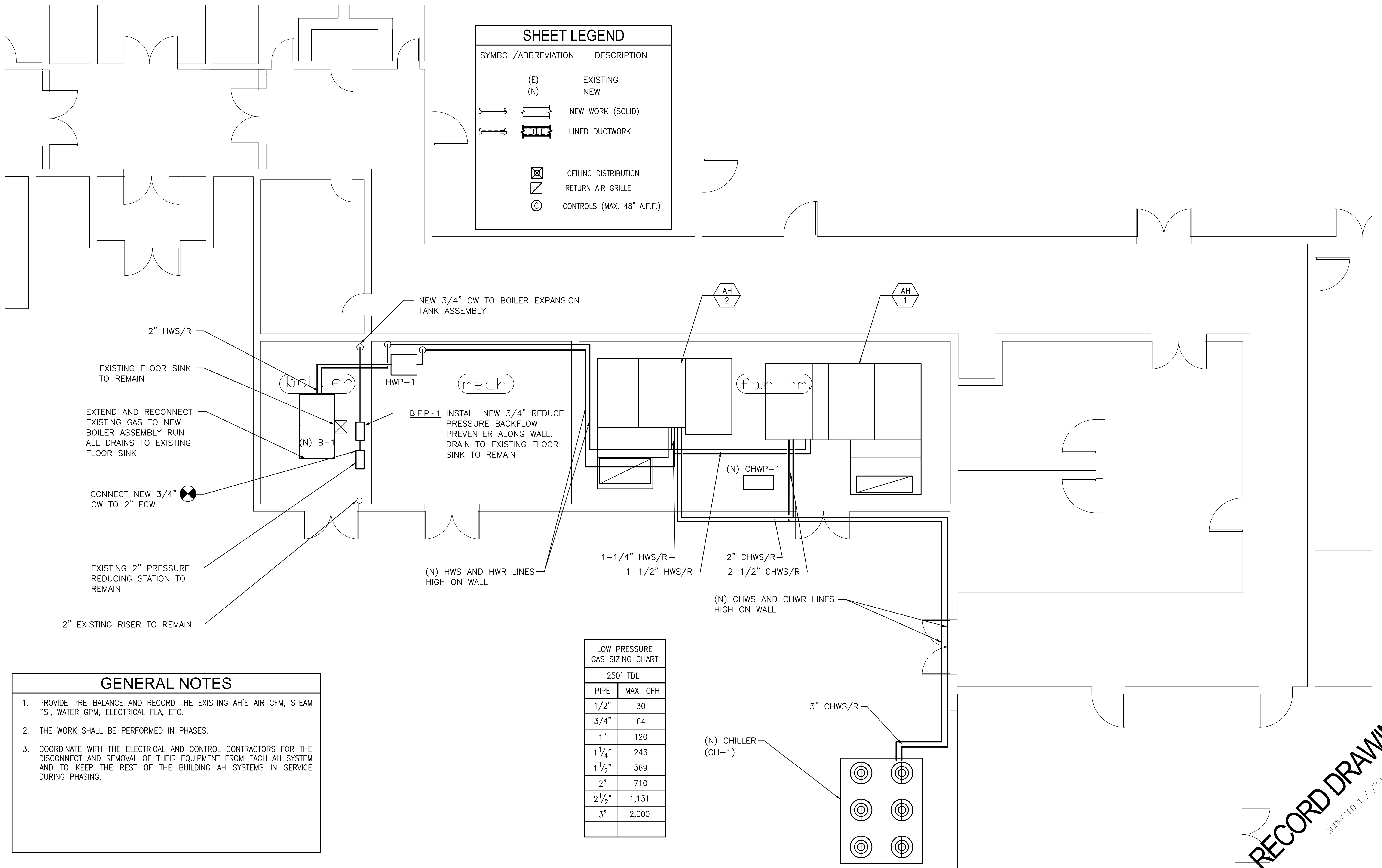


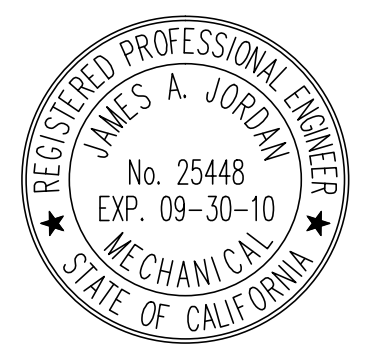
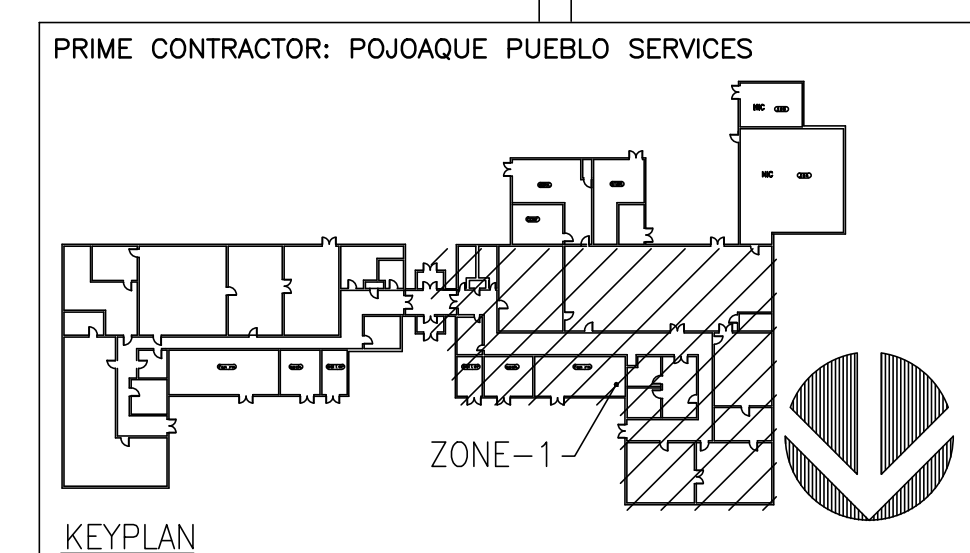
SHEET LEGEND	
SYMBOL/ABBREVIATION	DESCRIPTION
(E)	EXISTING
(N)	NEW
	NEW WORK (SOLID)
	LINED DUCTWORK
	CEILING DISTRIBUTION
	RETURN AIR GRILLE
	CONTROLS (MAX. 48" A.F.F.)



LOW PRESSURE GAS SIZING CHART	
250' TDL	
PIPE	MAX. CFH
1/2"	30
3/4"	64
1"	120
1 1/4"	246
1 1/2"	369
2"	710
2 1/2"	1,131
3"	2,000

- GENERAL NOTES**
1. PROVIDE PRE-BALANCE AND RECORD THE EXISTING AH'S AIR CFM, STEAM PSI, WATER GPM, ELECTRICAL FLA, ETC.
 2. THE WORK SHALL BE PERFORMED IN PHASES.
 3. COORDINATE WITH THE ELECTRICAL AND CONTROL CONTRACTORS FOR THE DISCONNECT AND REMOVAL OF THEIR EQUIPMENT FROM EACH AH SYSTEM AND TO KEEP THE REST OF THE BUILDING AH SYSTEMS IN SERVICE DURING PHASING.

1 ZONE-1 MECHANICAL ROOM NEW WORK
SCALE: 1/4"=1'-0"



RECORD DRAWINGS
SUBMITTED 11/21/2008

GLENDALE OFFICE
11111 GLENDALE BLVD. SUITE 210
GLENDALE, CA 91205
TEL: (626) 998-4001
FAX: (626) 998-4004
JOB NO. 08-038

BUDLONG & ASSOCIATES, INC.
CONSULTING ENGINEERS
WWW.BUDLONG.COM

DESIGN FOR:
BUILDING 1408
REPLACE CHILLER, BOILER AND AHU'S
EDWARDS AIR FORCE BASE, CALIFORNIA 93523-8450

QUOTE/DWG #:

DRAWN BY: TS
CHECKED BY:

DATE: 12/05/2008
SCALE: AS NOTED

REVISION HISTORY

1	
2	
3	
4	
5	

PRIME CONTRACTOR: POJOAQUE PUEBLO SERVICES

PROJECT: FA9301-06-D-0010
M2.1

J:\08-038 - EMB Building 1408 - Chiller, Boiler, AHU's - Western\08-038 - M2.1\Zone 1 - New work.dwg, 11/22/2008 9:21:09 AM