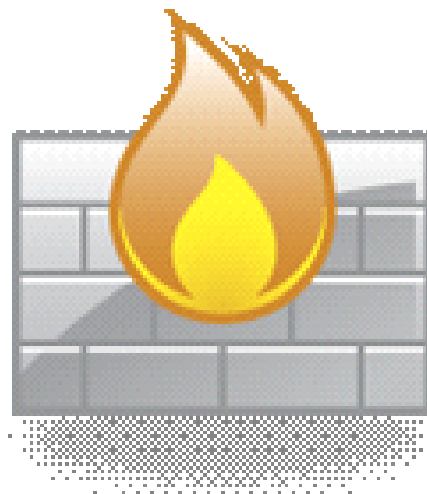


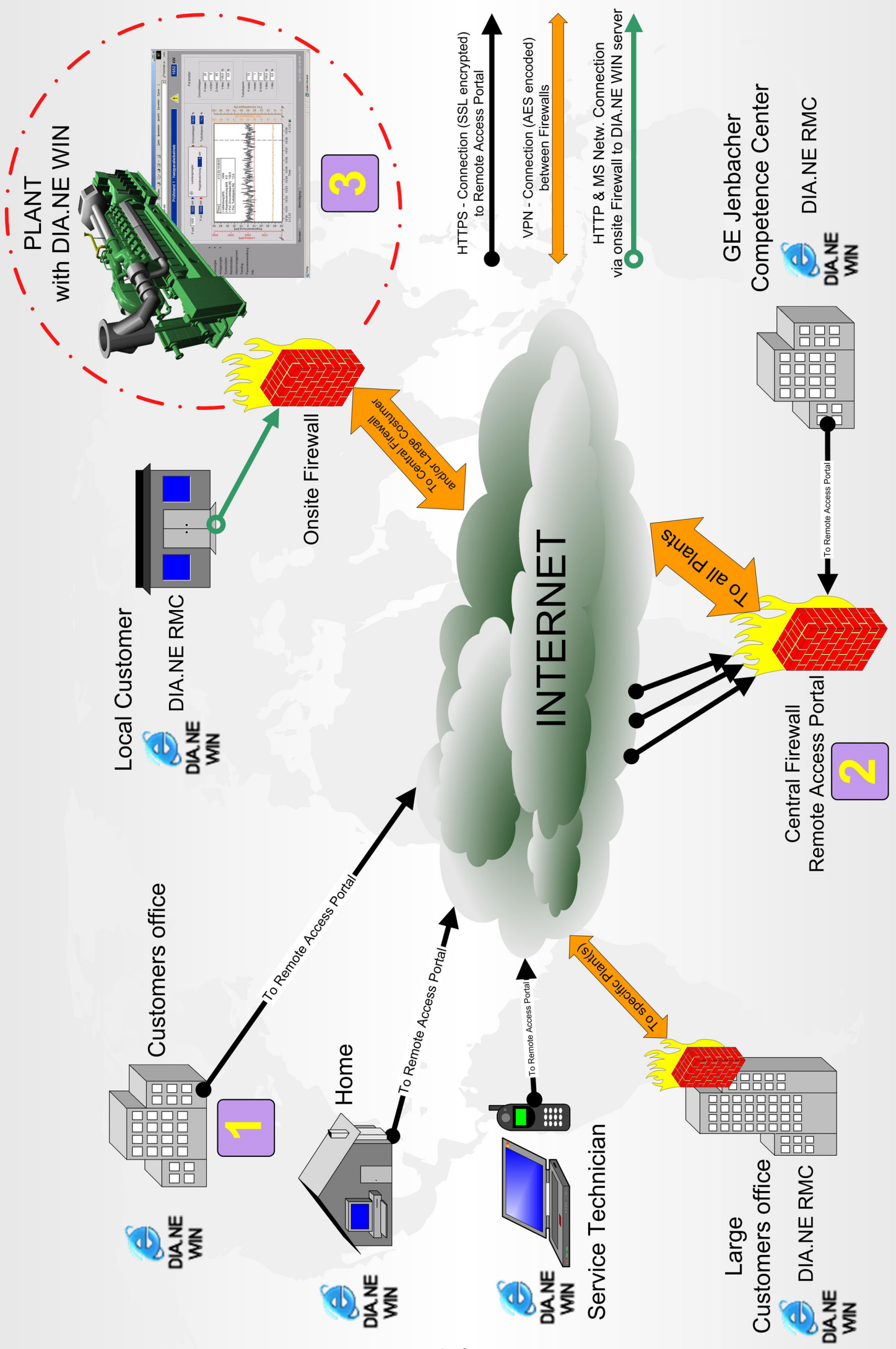
Internet Firewall Information

<u>Description</u>	<u>Page Number</u>
Internet Overview Diagram -----	2
Network Schematic – Hermes -----	4
Connection Methods -----	5
Security of Connectivity -----	11
Firewall Installation -----	14
Configuration Request Form -----	33

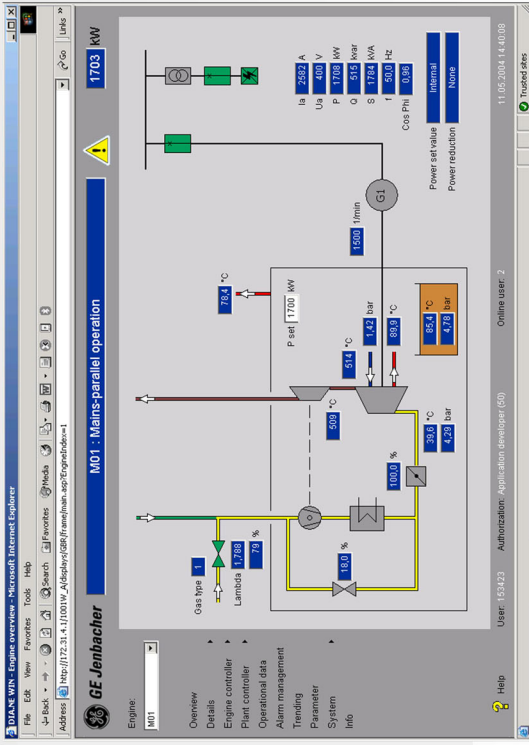
NOTE:

Configuration Request Form to be filled out by customer and returned to NES / WES
Configuration Request Form in Word Document on CD Disk
Or, can be obtained by request to skomraus@neesys.com



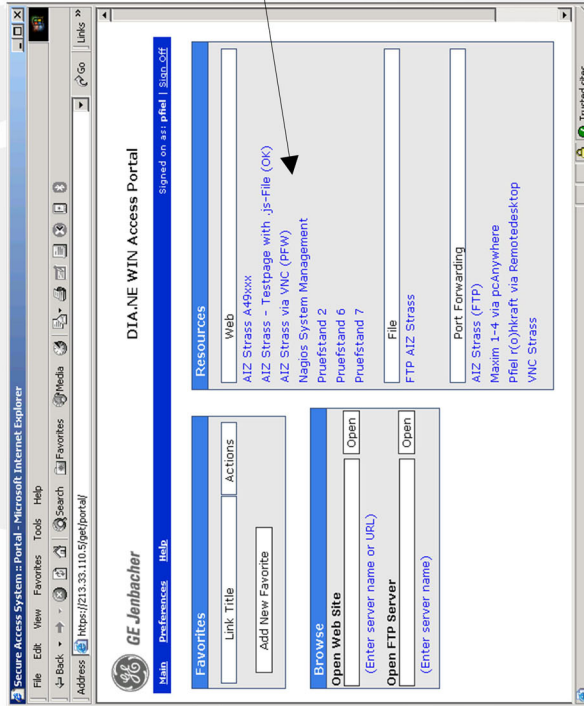


DIA.NE WIN Server onsite

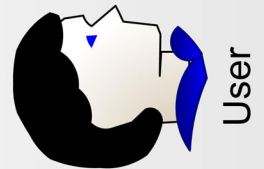
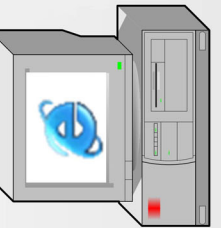


Encrypted VPN Connection between Central Firewall and Site Firewall

Remote Access Portal



Encrypted HTTPS - Connection to Remote Access Portal



The Remote Access Portal provides easy access of the desired DIA.NE WIN Application via Hyperlink. In addition also File Transfer (FTP) and Remote Control (pcANYWHERE*) is possible.

These links are customer specific and may be differ for each user.

The Remote Access Portal needs therefore user authentication and is password protected.

* for plants with older DIA.NE modem servers

