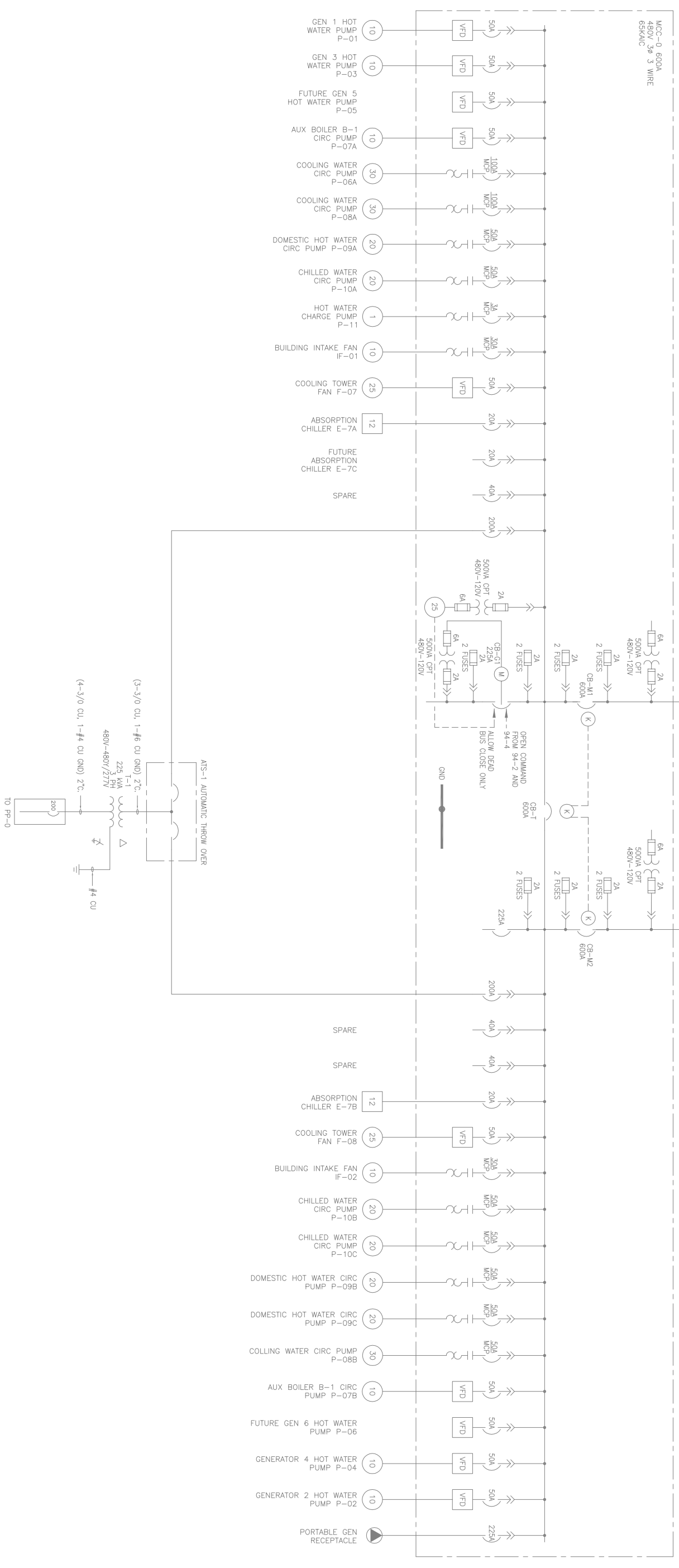


FROM PP1,  
CBMCM1  
TO E1-03  
(D)

FROM PP2,  
CBMCM2  
TO E1-04  
(E)

- NOTES:**
1. THE TIE BREAKER AND THE TWO MAIN BREAKERS IN MCC-0 SHALL BE INTERLOCKED SO THAT ONLY ONE OF THE MAIN BREAKERS MAY BE CLOSED ANY TIME THE TIE IS CLOSED.
  2. BREAKERS CB-M1, CB-M2, AND CB-T SHALL BE KEYPED TO PREVENT CLOSING CB-T UNLESS EITHER CB-M1 OR CB-M2 ARE OPEN



### GENERATION ADDITION

Colusa Indian Community Council 3730 Highway 45, Colusa, CA 95932

ONE-LINE DIAGRAM

REVISIONS				
NO.	DATE	DWN.	CHK.	
A	11/24/10	KM	KM	FOR REVIEW
B	8/4/11	KM	KM	ISSUED FOR PERMIT
C	7/17/12	GDY	GDY	RECORD DRAWING

ENGINEERED BY  
KM  
DRAWN BY CHECKED  
GDY JDB  
DATE SCALE  
4/3/12 N/A  
JOB NO. 2267

E1-05

P.O. Box 1265 Arvada, CO 80001  
(303) 431-7895 FAX (303) 431-1836