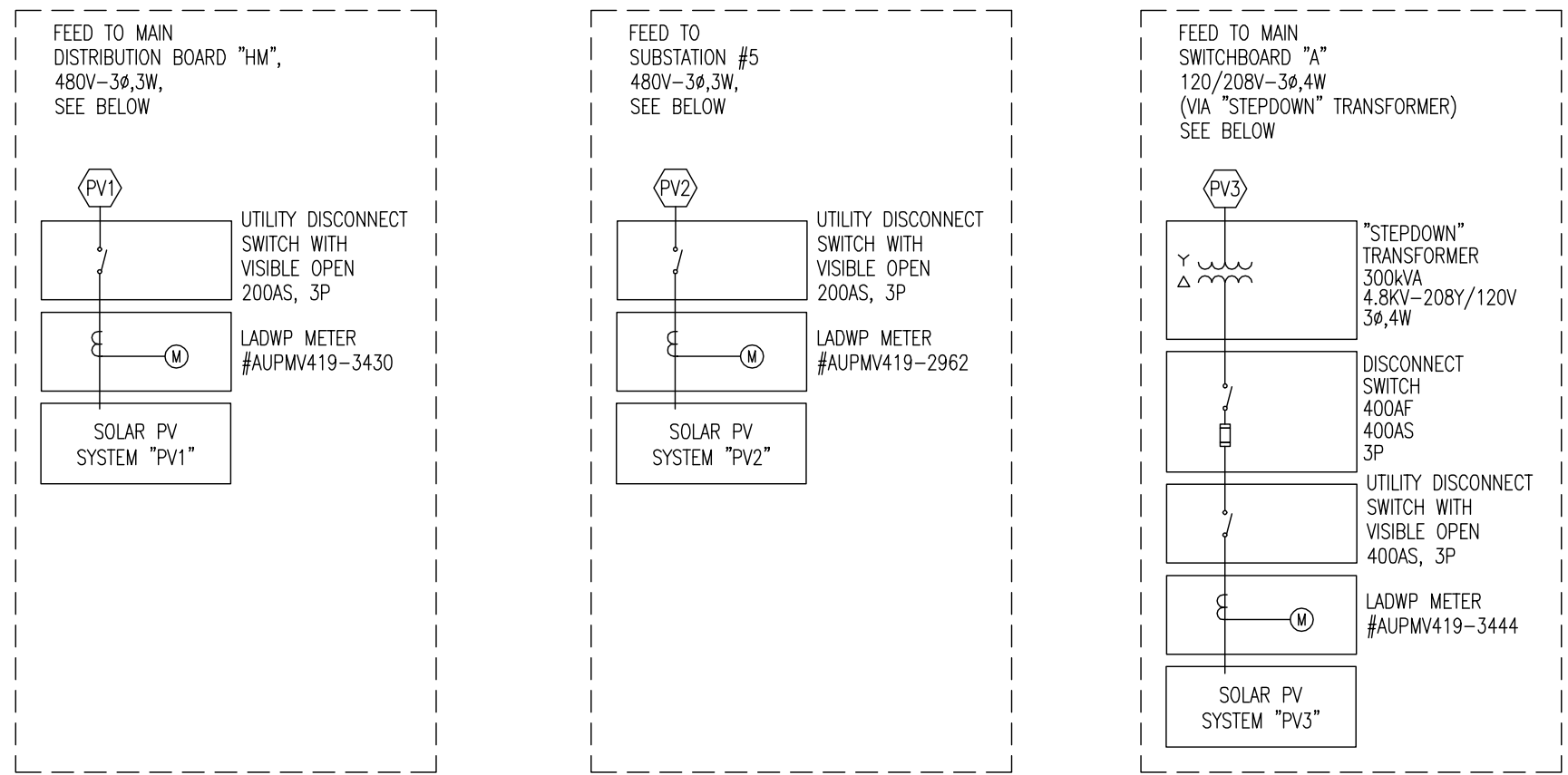


CBS TELEVISION CITY FUEL CELL INSTALLATION PROJECT

Table with columns: ID, DATE, REMARKS, REV. Includes revision history for design review, plan check, and clarification.

ENGR: DRWN BY: TEAM 1
CHK'D BY: RLL
DATE: 9/19/12
JOB NO.: 12-010
SCALE: AS NOTED

SHEET E4.01

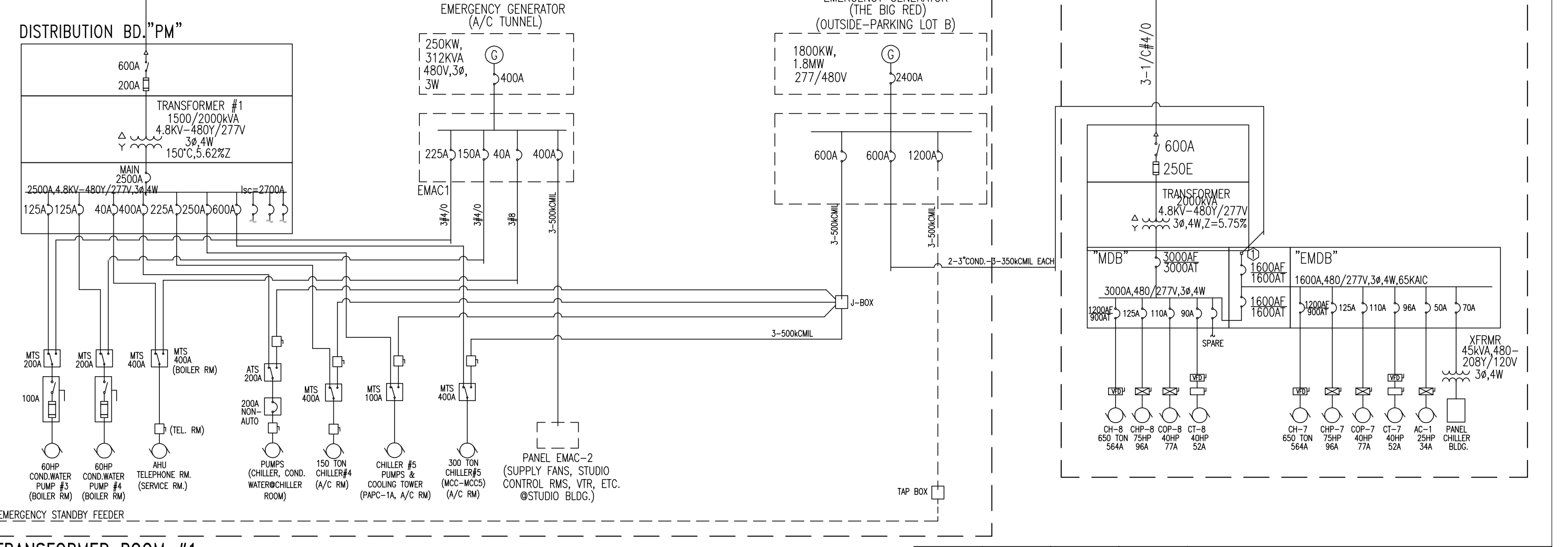
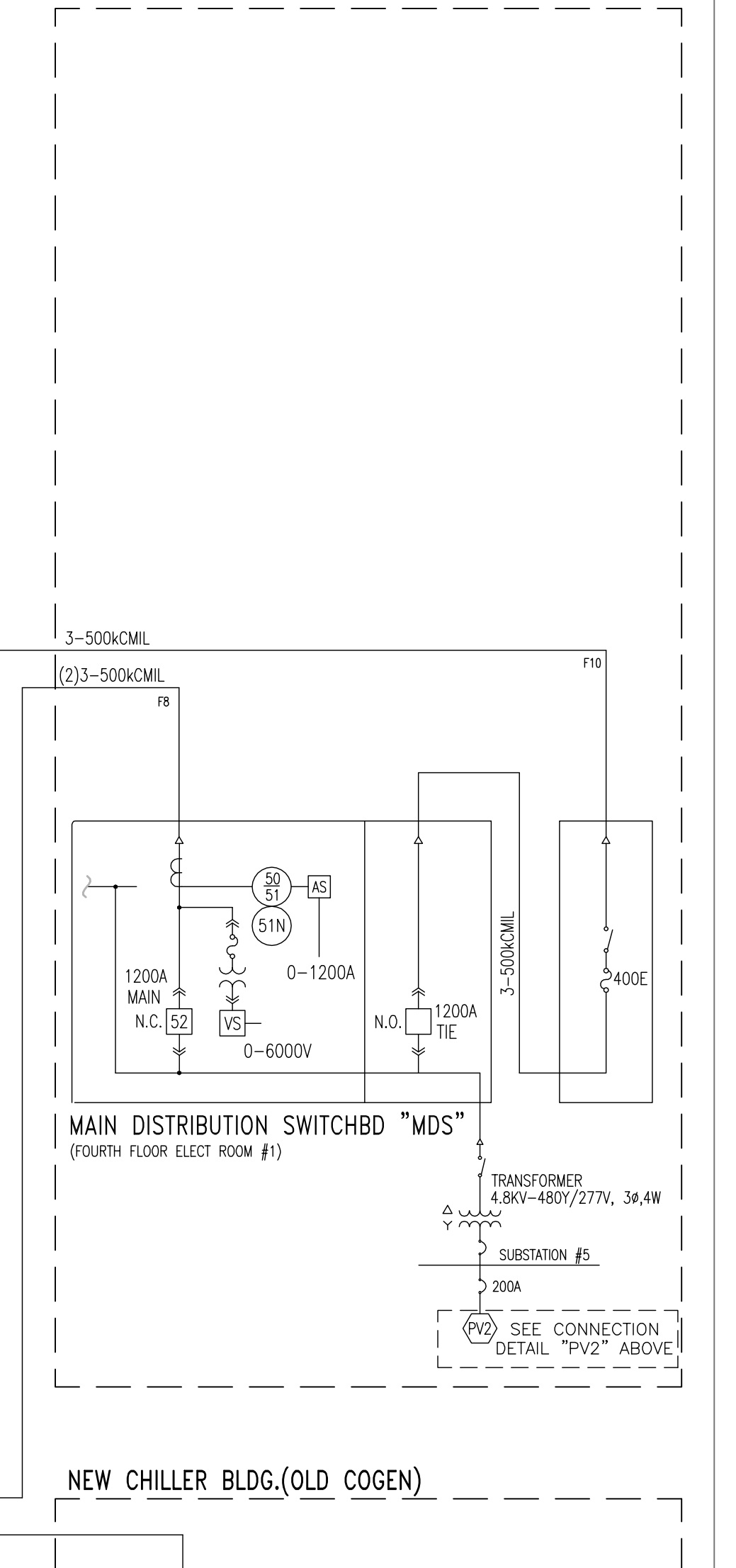
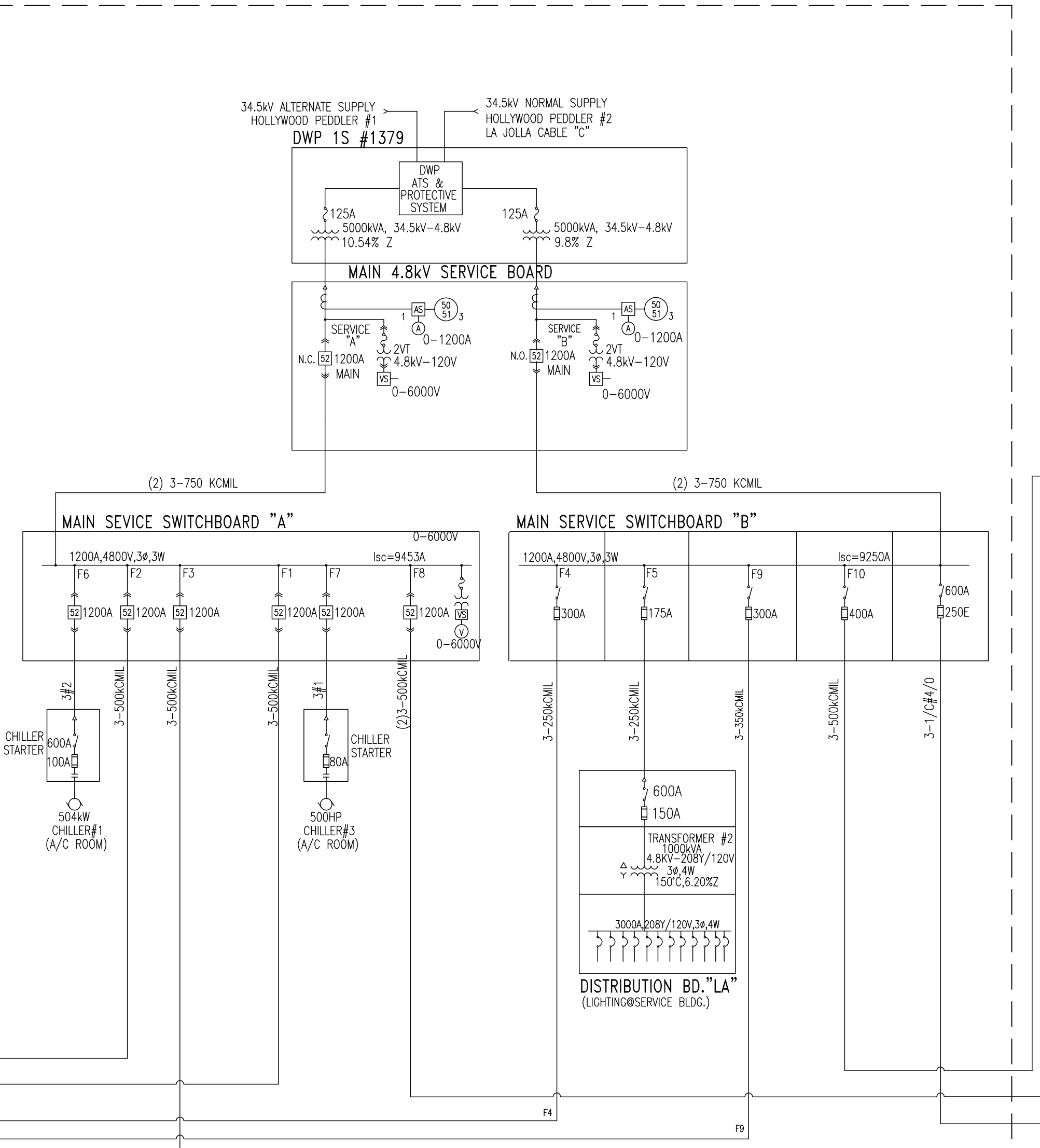
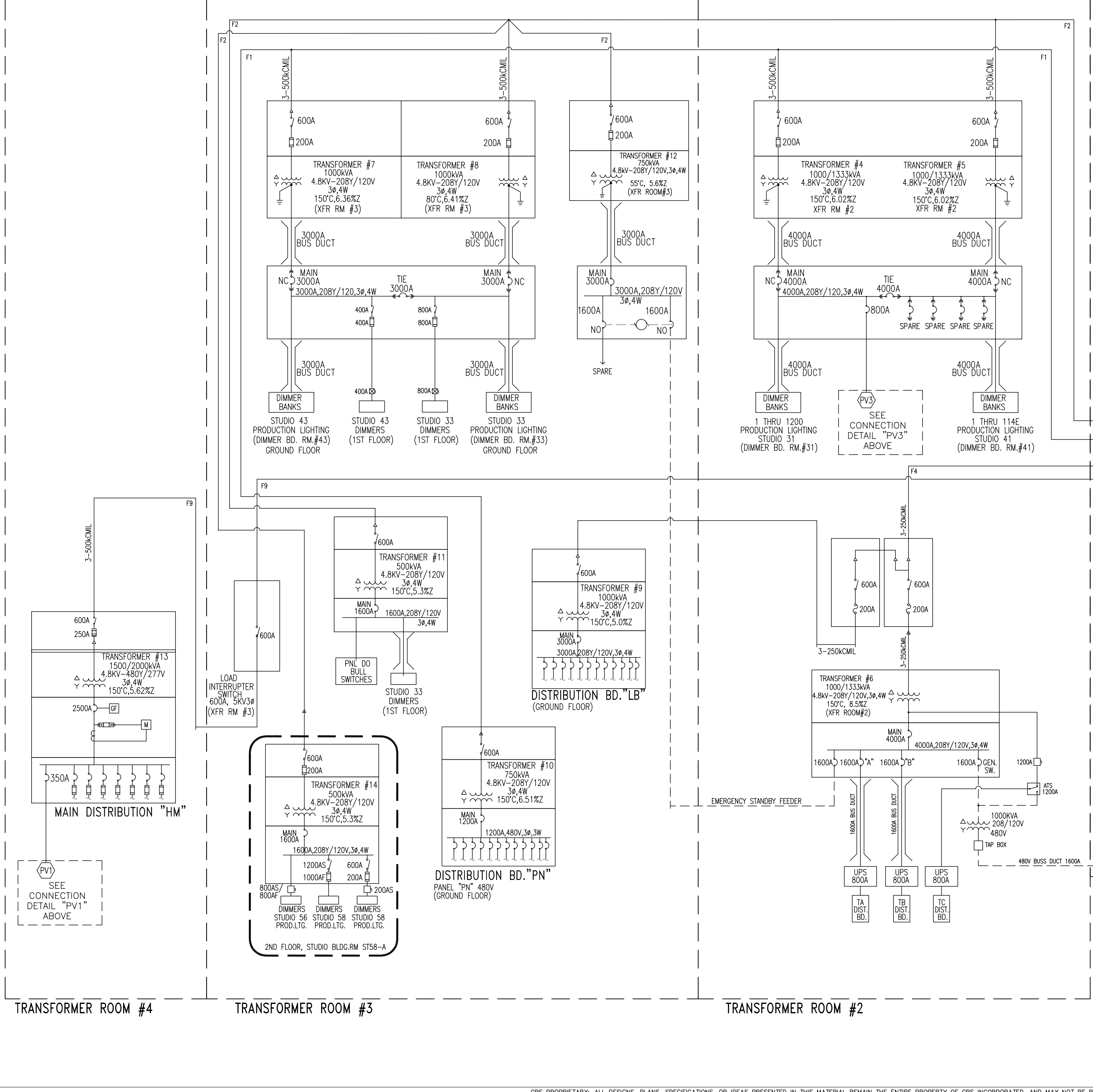


SUPPORT BUILDING

STUDIO BUILDING

SERVICE BUILDING

EAST STUDIO BUILDING



LEGEND:

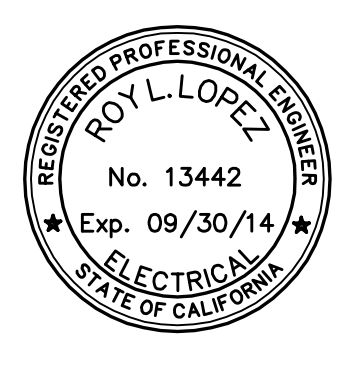
- "A" BUS
"B" BUS
EMERGENCY
EMERGENCY GENERATOR FEED POINT

NOTES:

- SYSTEM VOLTAGE 480V, 3Ø, 3W
AVAILABLE SHORT CIRCUIT CURRENT CAPACITY 9250A SYM.
LENGTH OF SERVICE WIRE 120 FT.
SERVICE "A" 170 FT.
SERVICE "B" 150 FT.
SERVICE BREAKER CAPACITY 25000A SYM.Ø4.8KV
EXISTING BREAKER CAPACITY 18000A SYM.Ø4.8KV
TOTAL CONNECTED LOAD: (1/9/08)

Table with columns: PROJ. NO., REV., BY, APR., DATE, DESCRIPTION. Includes project details and drawing information.

EXCERPT OF CBS TELEVISION CITY FACILITIES RECORDS OVERALL SINGLE LINE DIAGRAM (DEPICTS EXISTING SOLAR PHOTO VOLTAIC SYSTEMS)



THIS INFORMATION PROVIDED FOR REFERENCE ONLY

09/02/2012 16:21 Lost plotted by gregw@cs.cmu.edu 12/07/2012 11:06

CBS PROPRIETARY: ALL DESIGNS, PLANS, SPECIFICATIONS, OR IDEAS PRESENTED IN THIS MATERIAL REMAIN THE ENTIRE PROPERTY OF CBS INCORPORATED, AND MAY NOT BE REPRODUCED OR USED IN ANY MANNER WITHOUT ITS WRITTEN CONSENT.