

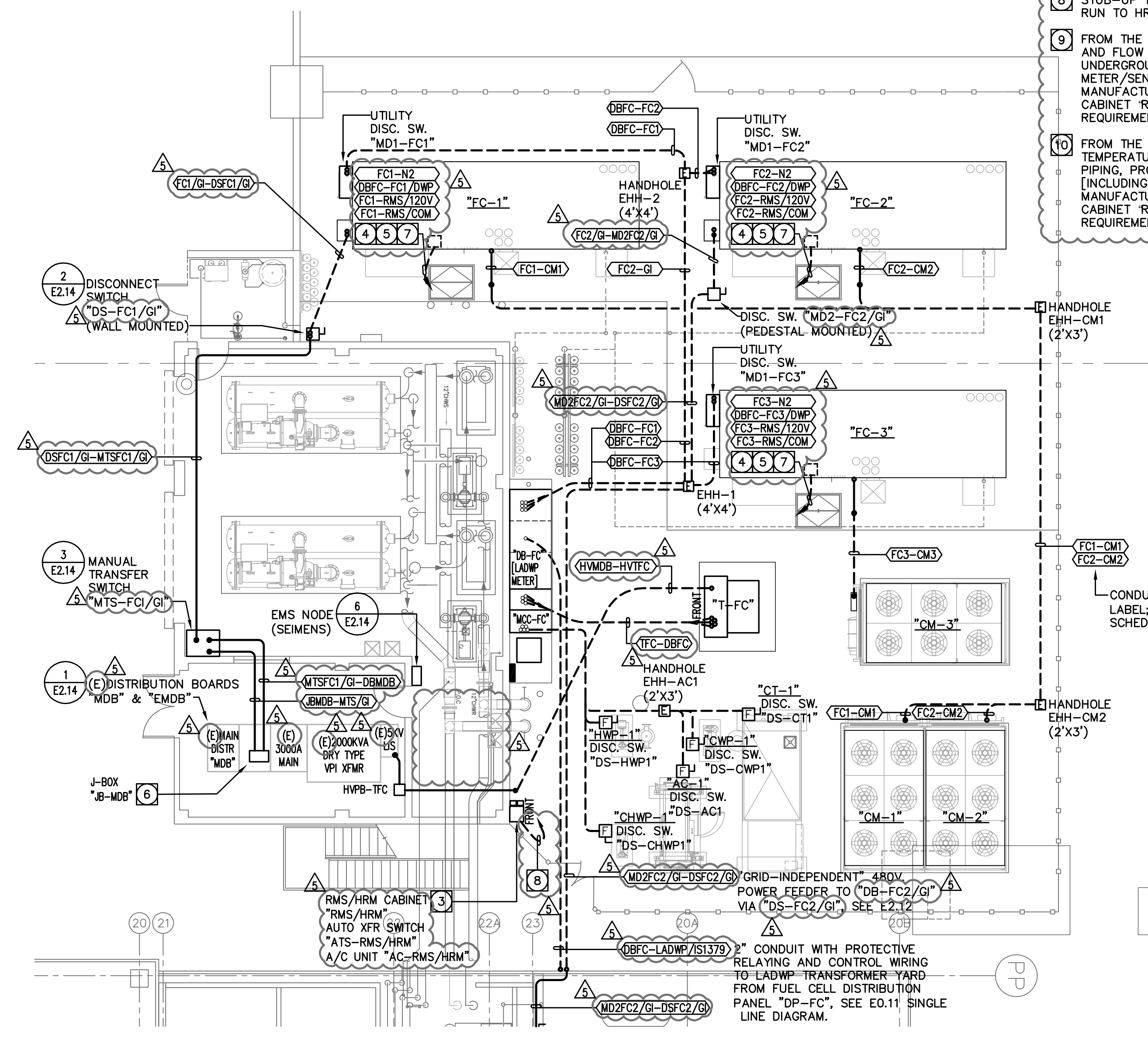
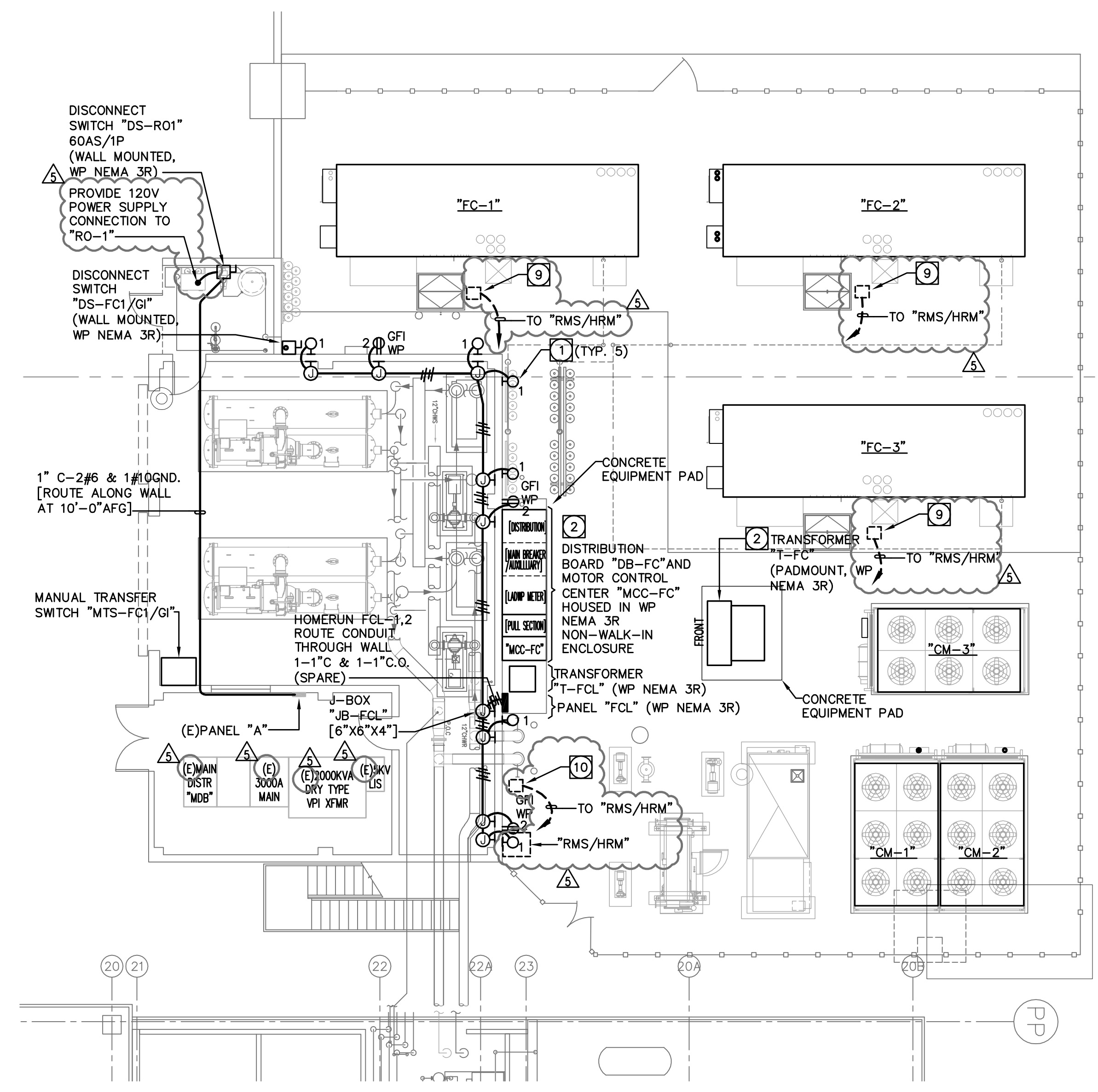
**ELECTRICAL PLAN - FUEL CELL YARD AND EXISTING CHILLER BLDG.**

ID	DATE	REMARKS	REV.
1	7/20/12	PRELIMINARY DESIGN REVIEW	
2	8/20/12	PLAN CHECK	
3	9/4/12	BID CLARIFICATIONS	
4	8/19/12	UTC RECOMMENDED CORRECTIONS	
5	10/18/12	UTC - REV. PLAN CHECK CORRECTIONS	

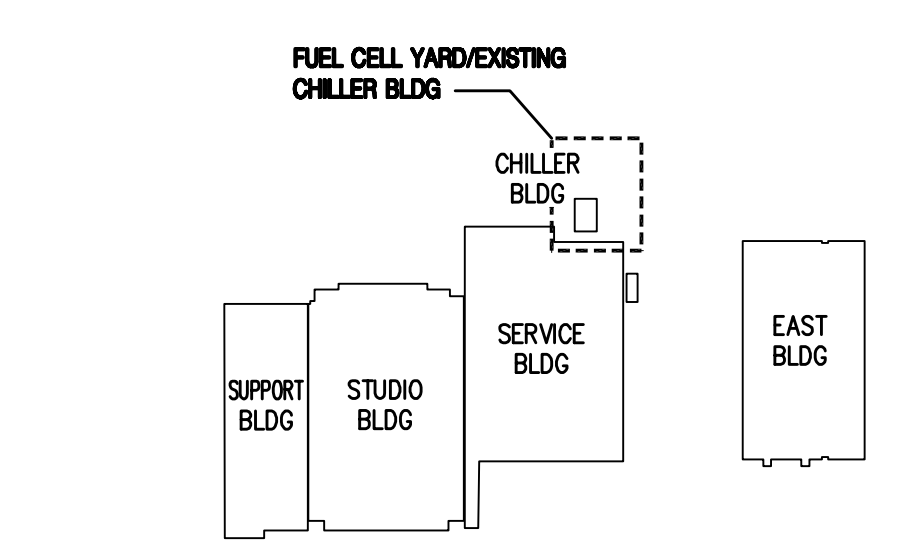
ENGR:	TEAM 1
CHK'D BY:	RL
DATE:	9/19/12
JOB NO.:	12-010
SCALE:	AS NOTED

**KEY NOTES**

- PROVIDE OUTDOOR WET LOCATION WALL MOUNTED WALLPAK FIXTURE AT 11'-0" AFG UON. LITHONIA #TWR1-150M-TB-LP1, INTERNAL PHOTOCCELL CONTROL, NON-CUTOFF WITH DARK BRONZE FINISH AND HIGH POWER FACTOR 120V BALLAST.
- PROVIDE ELECTRICAL GROUND ELECTRODE SYSTEM, SEE E0.11 SINGLE LINE DIAGRAM.
- EQUIPMENT FURNISHED BY UTC AND INSTALLED BY CONTRACTOR: RMS/HRM CABINET, AUTOMATIC TRANSFER SWITCH "ATS-RMS/HRM" (SEE DETAIL 1/E0.12), AND A/C UNIT "AC-RMS/HRM" (600VA, 208V-1Ø, FED FROM PANEL "FC1" WITH UNDERGROUND 1" C-2#12, 1#12GND.).
- PROVIDE UNDERGROUND CAT 5E COMMUNICATIONS DUCT/CABLE AND 120VAC BRANCH CIRCUIT TO RMS/HRM CABINET VIA AUTOMATIC TRANSFER SWITCH "ATS-RMS/HRM", SEE SINGLE LINE DIAGRAM, E0.11.
- PROVIDE UNDERGROUND CONTROL DUCT/WIRING TO DISTRIBUTION BOARD "DB-FC" FOR FUEL CELL INTERNAL BREAKER "MCO001" TRIP AND STATUS, SEE SINGLE LINE DIAGRAM E0.11.
- PROVIDE JUNCTION BOX "JB-MDB" (36" X 36" X 12") MOUNTED TO TOP OF EXISTING SWITCHBOARD TO INTERCEPT AND SPLICE TO EXISTING "BIG RED" GENERATOR FEEDER, SEE SINGLE LINE DIAGRAM E0.11.
- PROVIDE UNDERGROUND CONDUIT/WIRING TO NITROGEN GAS PRESSURE SWITCH.
- STUB-UP 1" CONDUIT FOR BTU METER SENSOR AND RUN TO HRMS PANEL.
- FROM THE LOCATION OF THE BTU METER SENSORS AND FLOW METER AT EACH FUEL CELL, PROVIDE UNDERGROUND 1-INCH DUCT (INCLUDING METER/SENSOR WIRING AS REQUIRED BY MANUFACTURER) TO THE HEAT RECOVERY MODULE IN CABINET "RMS/HRM". COORDINATE EXACT REQUIREMENTS WITH MECHANICAL.
- FROM THE LOCATION OF THE SUPPLY AND RETURN TEMPERATURE SENSOR ON THE CHILLED WATER PIPING, PROVIDE UNDERGROUND 1-INCH DUCT (INCLUDING METER/SENSOR WIRING AS REQUIRED BY MANUFACTURER) TO THE HEAT RECOVERY MODULE IN CABINET "RMS/HRM". COORDINATE EXACT REQUIREMENTS WITH MECHANICAL.



**KEY PLAN**



**1 ELECTRICAL PLAN - FUEL CELL YARD AND EXISTING CHILLER BLDG.**  
E2.11 SCALE: 1/8"=1'-0"



List saved by gennetw@esepnet.k...  
 Lost plotted by gennetw@esepnet.k...