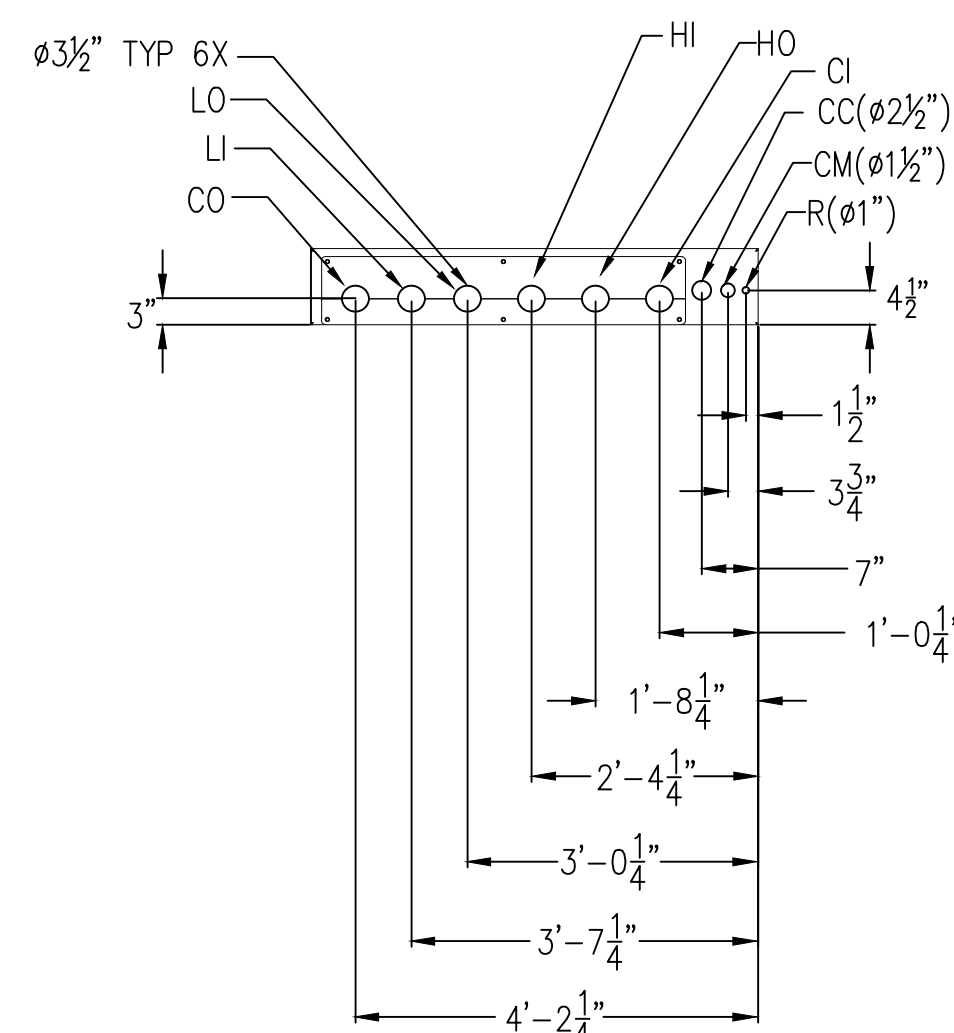


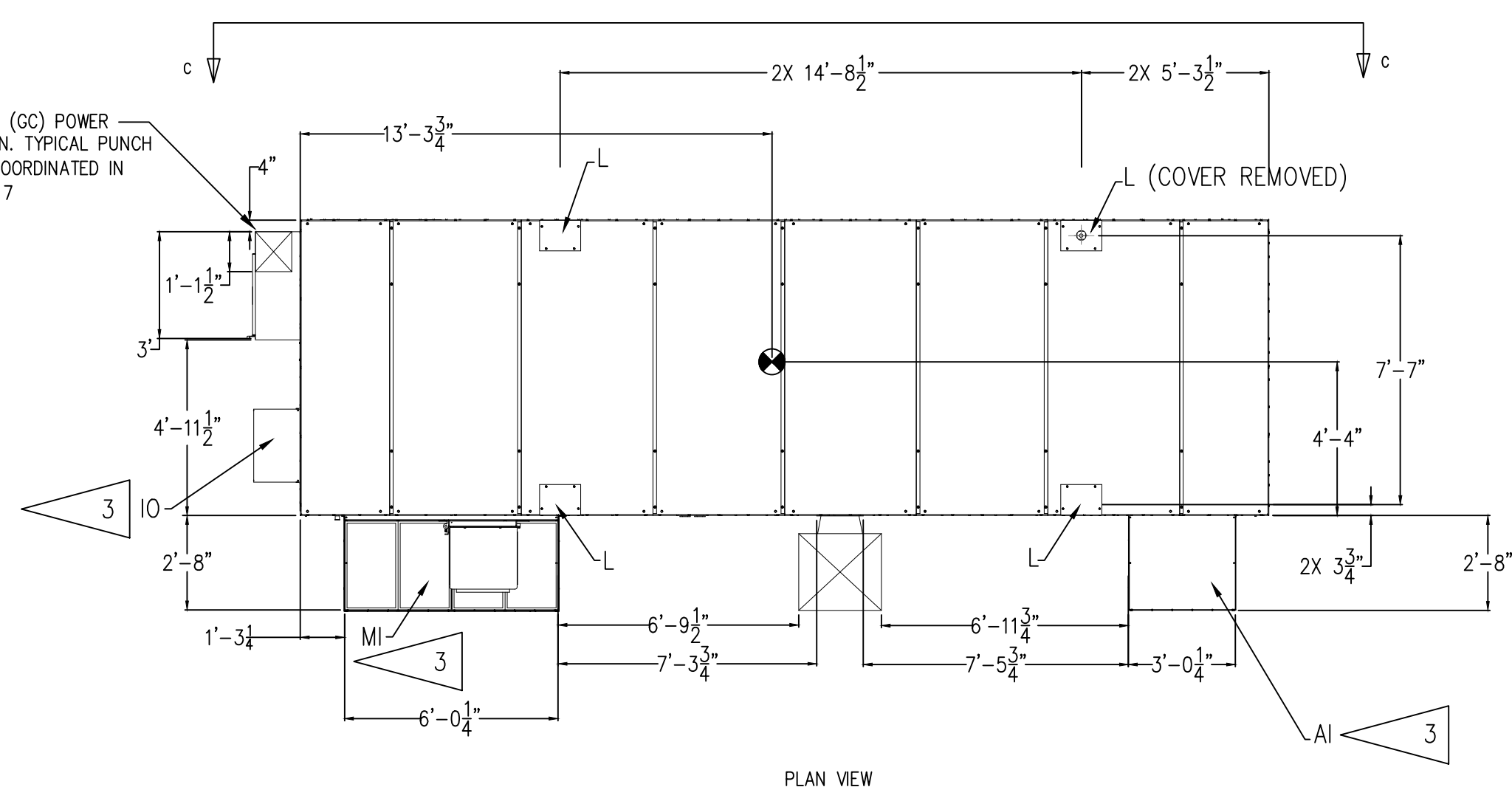
GENERAL SHEET NOTES:

- NOT USED.
- NOT USED.
- INLET & EXHAUST HOODS, EXHAUST CHIMNEY AND LIFT POINT COVERS ARE SHIPPED SEPARATELY AND ATTACHED ON-SITE. POWER PLANT MUST REMAIN COVERED UNTIL THESE ITEMS ARE INSTALLED.
- UNLESS OTHERWISE SPECIFIED, ALL DIMENSIONS ARE IN FEET AND INCHES.
- POWER PLANT WEIGHT: 60,000 LBS
- POWER PLANT SIZED FOR INTERSTATE SHIPPING ON SINGLE DROP FLATBED TRAILER. MAX SHIPPING DIMENSIONS ON BED: 10'-0" H X 8'6" W X 27'6" L
- INTERFACE DEFINITIONS:
 AI = AIR INLET, PROCESS AIR AND FUEL COMPARTMENT VENTILATION
 CC = CUSTOMER COMMUNICATIONS: INTERFACE OPENING CONDUIT SIGNAL CABLES
 - GRID ENABLE
 - EXTERNAL POWER DISPATCH
 - ZERO POWER EXPORT
 - NORMAL SHUTDOWN
 - HIGH GRADE HEAT TEMPERATURE SENSOR
 - EXTERNAL FAN CONTROL
 - EXTERNAL FLOW SENSING
 - FAST (EMERGENCY) SHUTDOWN
 - ETHERNET TO RMS
 - NITROGEN PRESSURE SWITCH
 CI = GLYCOL MIXTURE IN FROM COOLING MODULE: 2 INCH ASME B16.5 CLASS 150 LAP FLANGE, CS
 CO = GLYCOL MIXTURE OUT TO COOLING MODULE: 2 INCH ASME B16.5 CLASS 150 LAP FLANGE, CS
 CM = COOLING MODULE POWER
 FI = FUEL INLET: 2 INCH 150# LAP FLANGE, CS
 GC = GRID CONNECT POWER: REQUIRED ENCLOSURE OPENINGS PUNCHED IN FIELD. MAY BE LOCATED IN TOP OR BOTTOM OF DISCONNECT BOX
 GI = GRID INDEPENDENT LOAD: DISCARD COVER PLATE AND PROVIDE NEMA RATED ENCLOSURE AT BUS BAR CONNECTIONS
 GND = POWER MODULE GROUND
 HI = HIGH GRADE WATER IN FROM CUSTOMER: 2 1/2 INCH ASME B16.5 CLASS 150 LAP FLANGE, CS
 HO = HIGH GRADE WATER OUT TO CUSTOMER: 2 1/2 INCH ASME B16.5 CLASS 150 LAP FLANGE, CS
 IO = INVERTER VENTILATION AIR EXIT
 L = POWER PLANT LIFTING POINTS (4 PLCS) 1 1/2 INCH-6 UNC-2B THREAD. SEE NOTES 3 & 8
 LI = LOW GRADE WATER IN FROM CUSTOMER: 2 INCH ASME B16.5 CLASS 150 LAP FLANGE, CS
 LO = LOW GRADE WATER OUT TO CUSTOMER: 2 INCH ASME B16.5 CLASS 150 LAP FLANGE, CS
 LOI = LOCAL OPERATOR INTERFACE: LOCATED BEHIND PANEL
 MI = MOTOR COMPARTMENT AND INVERTER VENTILATION AIR INLET
 MO = MOTOR COMPARTMENT VENTILATION AIR EXIT
 NI = NITROGEN PURGE INLET: 3/4 INCH NPT FEMALE THREAD, CS
 PO = PROCESS GAS EXHAUST
 ESB = EXTERNAL SHUTDOWN BUTTON
 R = REMOTE MONITORING 120 VAC POWER ENCLOSURE OPENING
 T = TIE DOWN LOCATIONS (4 PLCS): 3" HOLE.
 WI = MAKEUP WATER INLET: 3/4 INCH FNPT, CS
 WO = WATER TANK OVERFLOW: 3/4 INCH FNPT, CS
- LIFT POWER PLANT ONLY AT LIFT LOCATIONS (L), USING FOUR 1 1/2 INCH-6 UNC-2B SWIVEL HOIST RINGS RATED AT 24,000 LBS. MINIMUM DISTANCE BETWEEN TOP OF POWER PLANT AND CRANE HOOK TO BE 25 FEET.
- PROVIDE LEVEL FLOOR. FLATNESS OF 1/8" IN 10 FT TO BE MAINTAINED. HOUSEKEEPING PAD NOT REQUIRED.
- ANY VIOLATIONS OF MAINTENANCE CLEARANCES (REFERENCE INSTALLATION MANUAL (FCMAN70865)) NEED PRIOR APPROVAL FROM UTC POWER AFTERMARKET AND INSTALLATION SERVICES.
- TO BE INSTALLED PER NFPA 853.
- NOT USED
- RECOMMENDED TIE DOWN BRACKETS FC69802-01
- FOR GRID INDEPENDANT CONNECTIONS, ADEQUATE DIELECTRIC SPACE MUST BE MAINTAINED AT BUS BARS. PER ANSI FCI, 3/8" MINIMUM AIR GAP OR 1/2" MINIMUM SURFACE TRACKING (CREEPAGE) GAP MUST BE MAINTAINED.
- FOR 1/0 DETAILS REFERENCE FCMAN70865
- BRACKET HOLES FOR FLOOR BRACKETS MAY BE UTILIZED FOR ADDITIONAL SEISMIC SUPPORT AND/OR TIE DOWNS WHEN FLOOR IS NOT INSTALLED. DESIGN AND MATERIAL BY OTHERS. SHIM AS REQUIRED.
- NOTE THE CLEARANCE REQUIRED FOR PIPING IN CUSTOMER INTERFACE AREA. MAINTENANCE WORK PLATFORM BUILT OVER PIPING MUST NOT EXCEED 1'-5" FROM BOTTOM OF FRAME. DO NOT EXTEND PLATFORM BEYOND WIDTH OF DOOR ABOVE PIPING TO AVOID OBSTRUCTING ADJACENT DOORS.

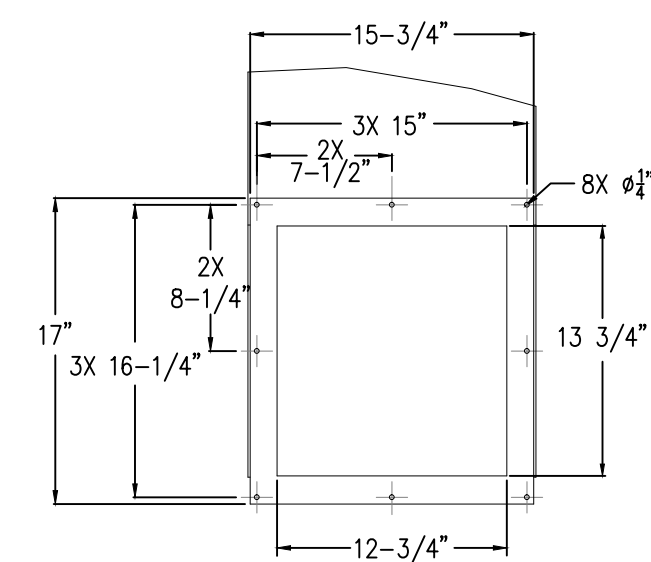


DETAIL VIEW A
SCALE: NONE
DIAMETER SIZES ARE ENCLOSURE PANEL OPENINGS ONLY. CONNECTION SIZES WITHIN MAY VARY.

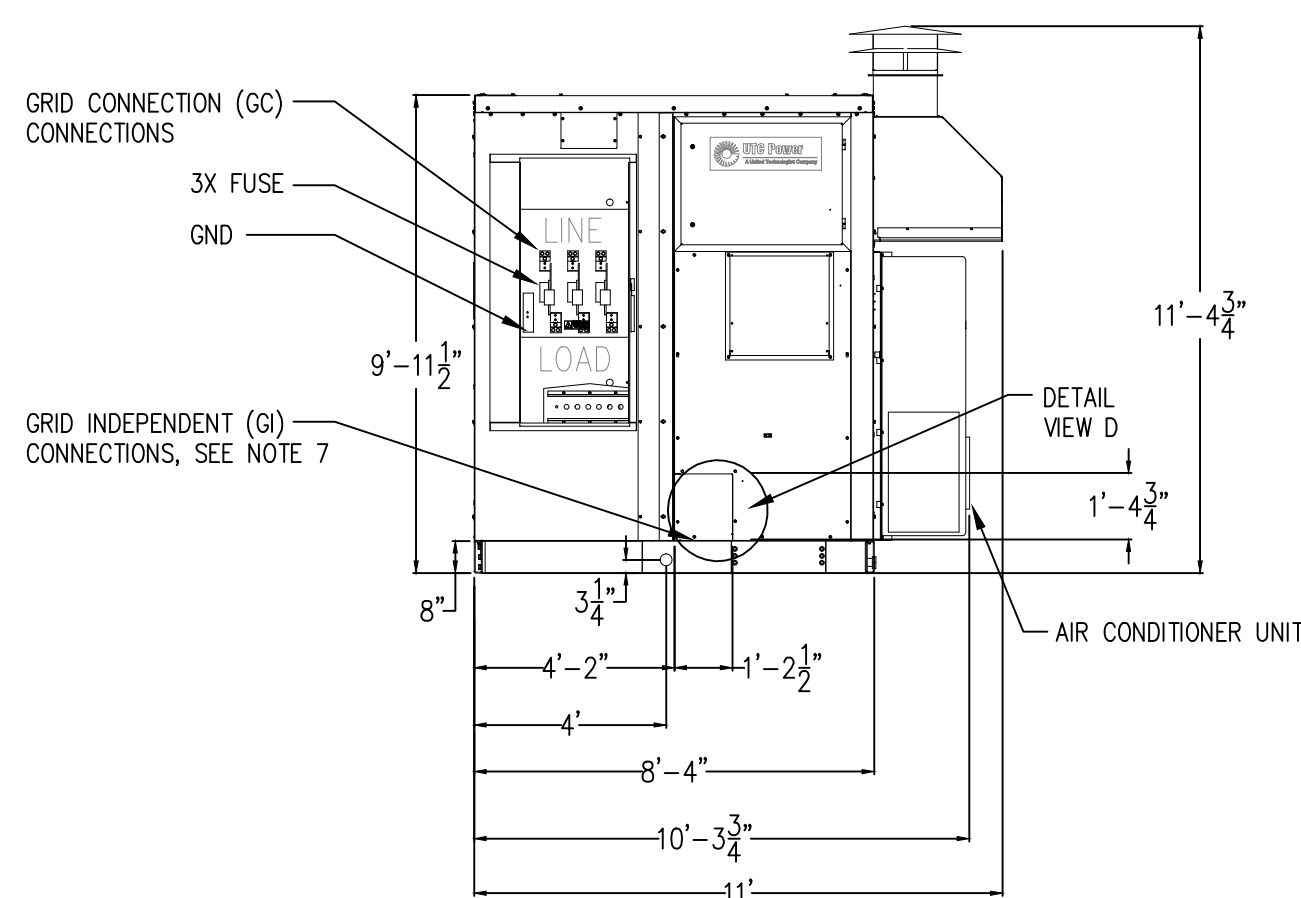
GRID CONNECTION (CC) POWER CONDUIT LOCATION. TYPICAL PUNCH OUT LOCATION (COORDINATED IN FIELD) SEE NOTE 7



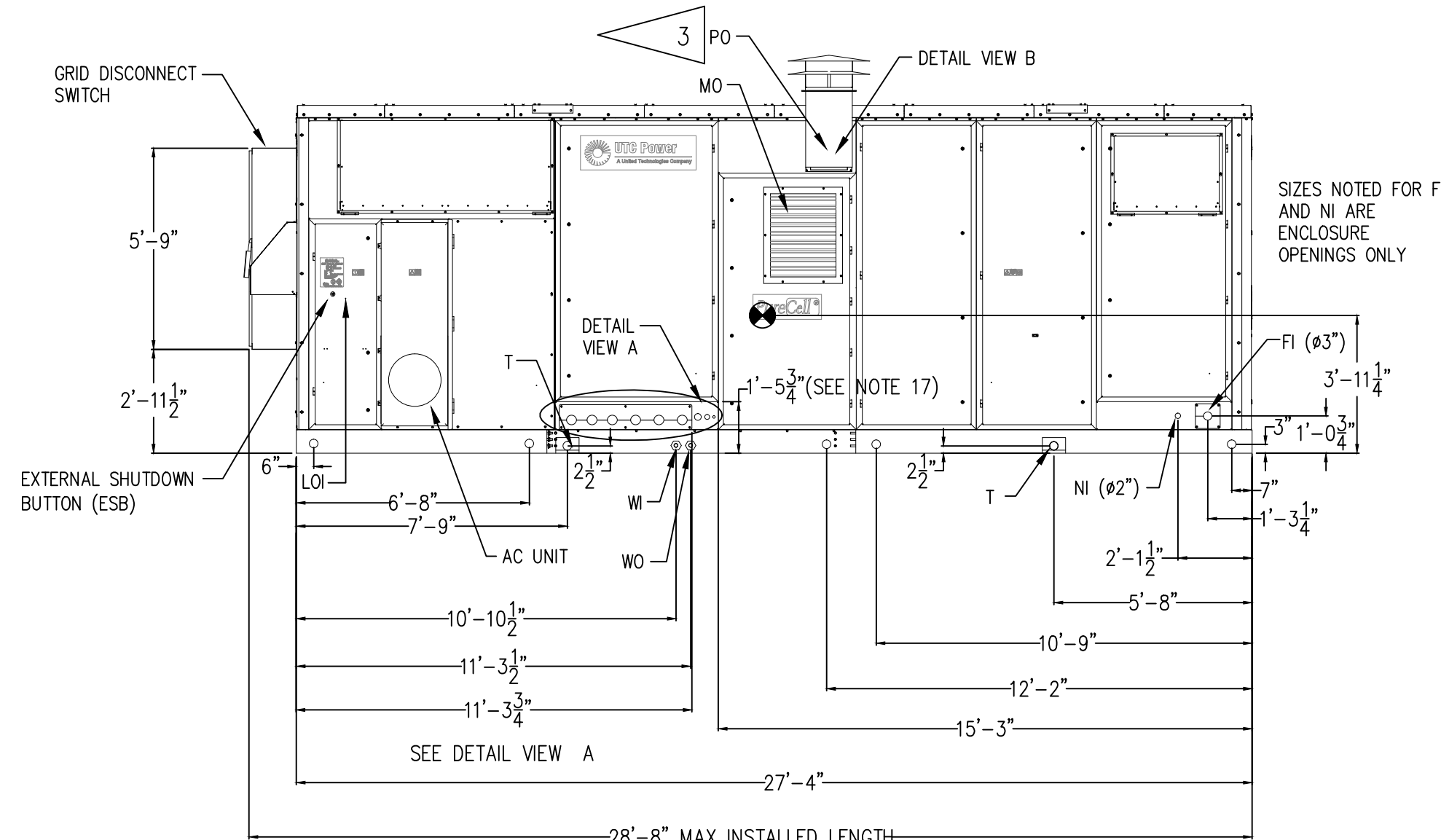
PLAN VIEW



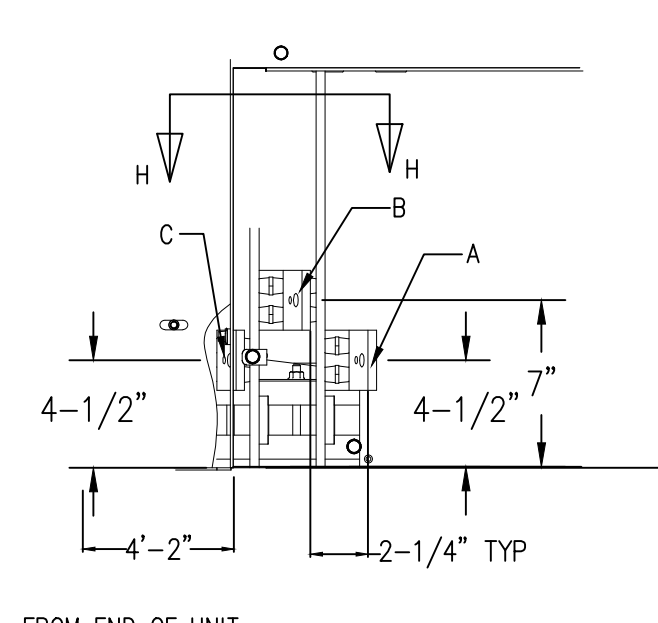
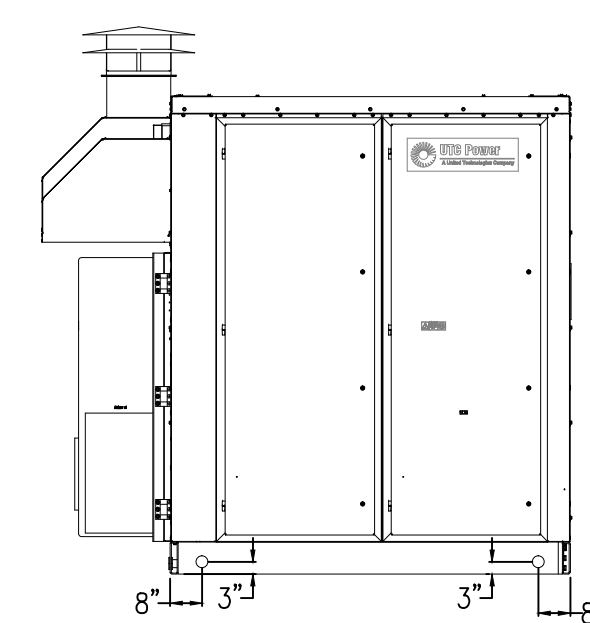
DETAIL VIEW B
SCALE: NONE
EXHAUST TO BE INSTALLED IN FIELD



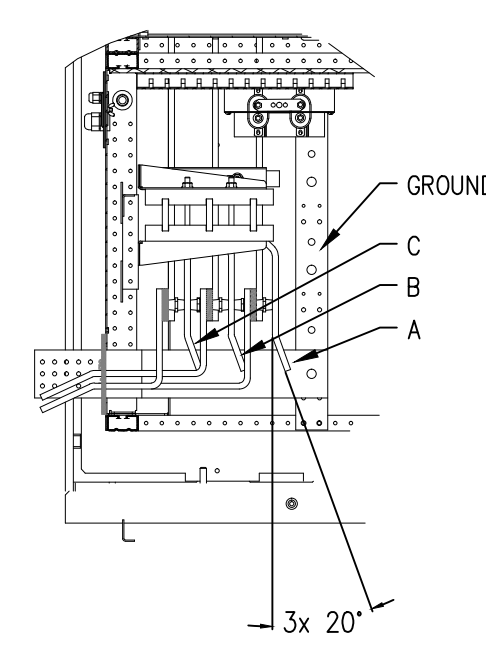
SIDE VIEW



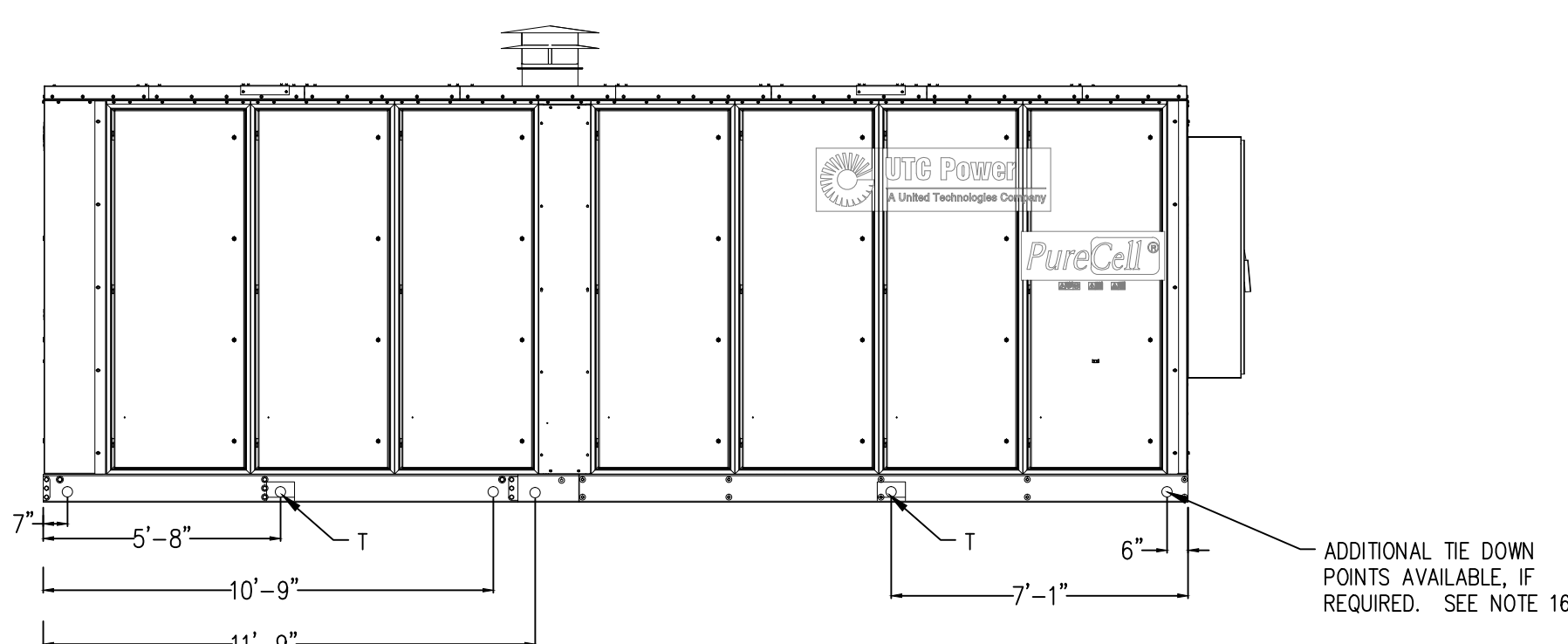
ELEVATION VIEW



DETAIL VIEW D
SCALE: NONE
GRID INDEPENDENT CONNECTIONS



SECTION VIEW H-H
SCALE: NONE
GRID INDEPENDENT BUS BARS AND GROUND



VIEW C-C

ADDITIONAL TIE DOWN POINTS AVAILABLE, IF REQUIRED. SEE NOTE 16



**CBS TELEVISION CITY
FUEL CELL INSTALLATION PROJECT**

ID	DATE	REMARKS
1	7/02/12	PRELIMINARY DESIGN REVIEW
2	8/20/12	PLAN CHECK
3	9/14/12	BD CLARIFICATIONS
4	9/19/12	UTC RECOMMENDED CORRECTIONS
5	9/25/12	UTC COMMENTS/REVISIONS

ENGR:	WTB
DRWN BY:	WTB
CHK'D BY:	WTB
DATE:	9/19/12
JOB NO.:	12-010
SCALE:	AS NOTED

