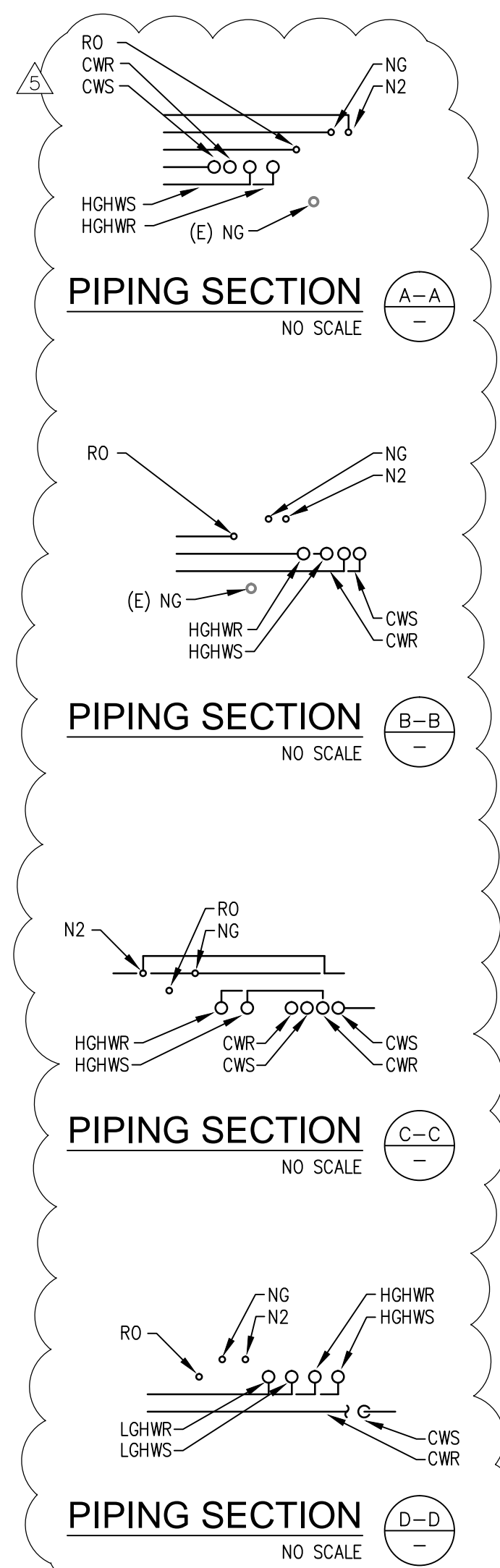
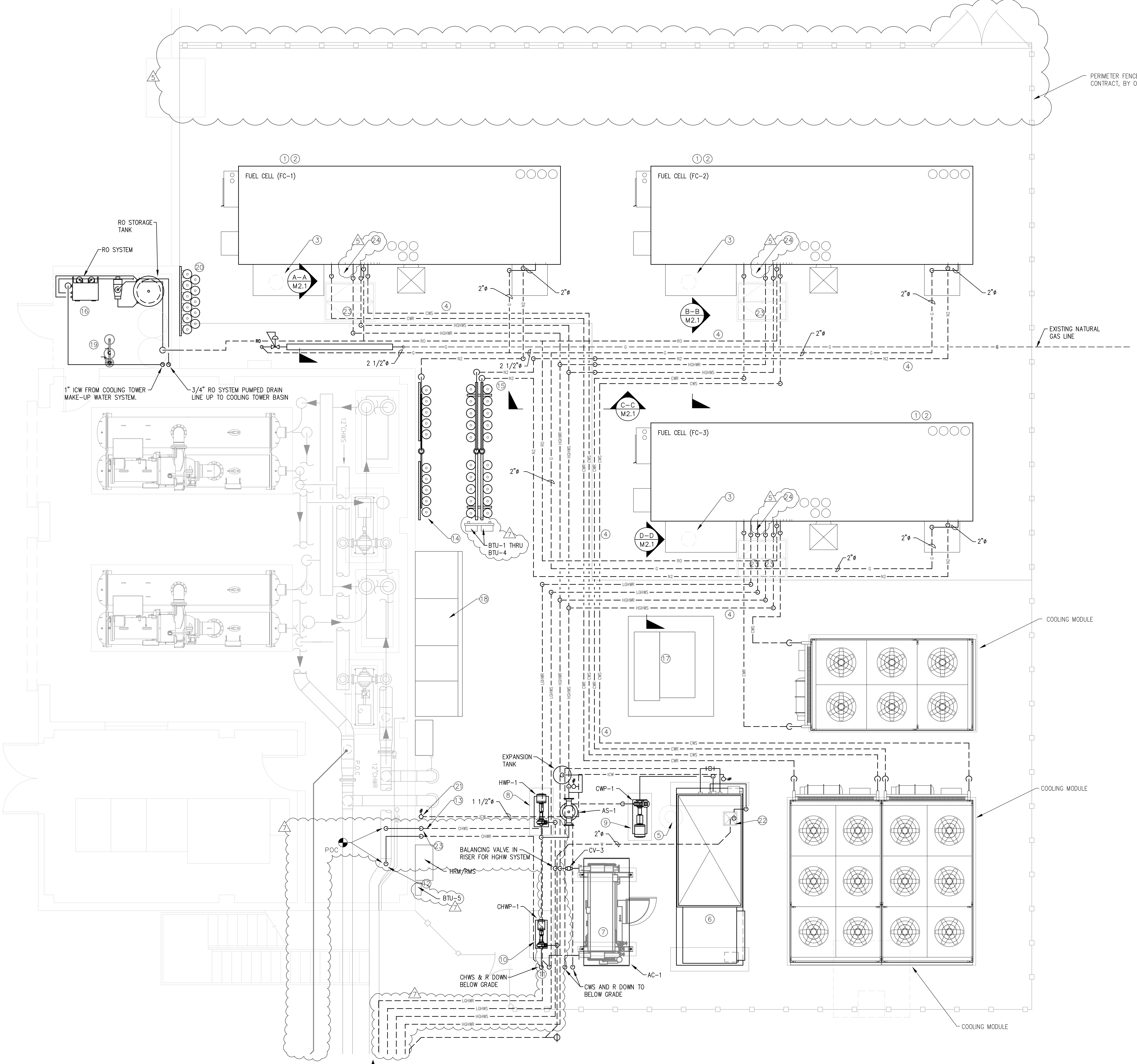


SHEET NOTES:

- ① FUEL CELLS TO BE INSTALLED ON A FLAT CONCRETE SLAB THAT EXTENDS (60" (MIN.) FROM EACH SIDE OF THE FUEL CELL. (SEE STRUCTURAL DWGS. FOR DETAILS)
- ② PROVIDE CLEARANCES AS REQUIRED BY UTC FOR SERVICE OF FUEL CELLS.
- ③ PROVIDE A 12" Ø x 24" DEEP DRY WELL FILLED WITH CRUSHED STONE FOR CONDENSATE DRAINS.
- ④ UNDERGROUND SERVICE PIPING (SERVICE AS INDICATED) TO/FROM FUEL CELLS AND FUEL CELL SUPPORTING EQUIPMENT.
- ⑤ DECOMMISSIONED TEST WELL. CBS TV STUDIOS TO COORDINATE THE DE-COMMISSIONING OF TEST WELL PRIOR TO THE BEGINNING OF CONSTRUCTION.
- ⑥ COOLING TOWER
- ⑦ ABSORPTION CHILLER
- ⑧ HIGH GRADE HOT WATER PUMP
- ⑨ CONDENSER WATER PUMP
- ⑩ CHILLED WATER PUMP
- ⑪ PIPING ROUTED ABOVE GROUND AT ABSORPTION CHILLER AND COOLING TOWER TO BE SUPPORTED ON PIPE STANCHIONS WHILE MAINTAINING ACCESS TO AREAS.
- ⑫ NEW ABSORPTION CHILLER CHILLED WATER CONNECTIONS TO EXISTING CHILLED WATER RETURN PIPING SYSTEM.
- ⑬ ROUTE NEW CHILLED WATER PIPING UP ALONG EXTERIOR WALL OF CENTRAL PLANT BUILDING. PENETRATE BLDG. AT A LOCATION OF APPROX. 24 INCHES ABOVE EXISTING CHWR PIPE.
- ⑭ WALL MOUNTED NITROGEN TANK SYSTEM. ATTACHED TO EXISTING CENTRAL PLANT BLOCK WALL.
- ⑮ FREE STANDING NITROGEN TANK SYSTEM TO BE EQUIPPED WITH TWO MANIFOLDS TO SERVE TWO FUEL CELLS SEPARATELY.
- ⑯ RO WATER SYSTEM CONNECTED TO EXISTING DOMESTIC WATER SYSTEM LOCATED AT THIS LOCATION AND ROUTED RO WATER TO EACH FUEL CELL.
- ⑰ NEW TRANSFORMER
- ⑱ NEW ELECTRICAL SWITCH GEAR
- ⑲ RELOCATED EMERGENCY SHOWER & EYEWASH REPIPE TO (E) WATER SUPPLY
- ⑳ SPARE NITROGEN BOTTLE STORAGE AREA. PROVIDE ROOM TO STORE UP TO 10 EXTRA NITROGEN BOTTLES. BOTTLES TO BE SECURED TO EXISTING WALL.
- ㉑ PROVIDE 1 1/2" INDUSTRIAL WATER FROM COOLING TOWER MAKE-UP WATER SYSTEM ABOVE. ROUTE ALONG EXTERIOR WALL (PAINT TO MATCH WALL COLOR) AND PROVIDE HOSE BIB AND CONTINUE PIPING UNDERGROUND AS INDICATED.
- ㉒ 12"x12"x12" FLOOR SINK TO REMOVE COOLING TOWER DRAIN WATER. GRAVITY DRAIN TO EXISTING FLOOR TRENCH DRAIN IN SERVICE BUILDING BOILER ROOM.
- ㉓ PROPOSED LOCATIONS OF BTU METER TEMPERATURE SENSORS AND FLOW METERS. CONTRACTOR TO INSTALL SENSORS AS DIRECTED BY MANUFACTURER AND PROVIDE REQUIRED UNOBSTRUCTED PIPE LENGTHS REQUIRED FOR PROPER OPERATION. IF LOCATION DOES NOT ALLOW FOR REQUIRED UNOBSTRUCTED LENGTHS, ALTERNATIVE LOCATIONS WILL NEED TO BE DETERMINED IN THE FIELD.
- ㉔ PROVIDE DECORATIVE SHEET METAL COVER TO CONCEAL PIPE ATTACHED TO FUEL CELL. COVER TO PROTECT PIPE AND PIPE INSULATION AND TO WITHSTAND SOMEONE STANDING ON COVER. AT HEAT PIPE HOOK-UP AND NATURAL GAS HOOK-UP LOCATIONS (TWO PER FUEL CELL).



ENLARGED MECHANICAL FUEL CELL AREA PLAN
SCALE: 1/4" = 1' - 0"

KEYSTONE
Engineering Solutions, Inc.
9550 Research Dr., Irvine, California 92618
www.keystone.com

**CBS TELEVISION CITY
FUEL CELL INSTALLATION PROJECT**

7800 BEVERLY BLVD.
LOS ANGELES, CALIFORNIA 90036

ID	DATE	REMARKS
1	7/02/12	PRELIMINARY DESIGN REVIEW
2	8/20/12	PLAN CHECK
3	9/19/12	UTC COMMENTS
4	9/19/12	UTC COMMENTS
5	9/25/12	UTC COMMENTS

ENGR:	WTB
DRWN BY:	KAP
CHK'D BY:	WTB
DATE:	9/19/12
JOB NO.:	12-010
SCALE:	AS NOTED

SHEET
M2.1

